

Reflections is the newsletter of The William Breman Jewish Heritage & Holocaust Museum, Atlanta, Georgia, and is made possible through the generosity of Elinor R. Breman, in loving memory of William Breman.

# REFLECTIONS

## 2011-2012 Special Exhibition Season Brings Torn From Home and The Art of Gaman to The Breman

### IN THIS ISSUE

Archives News ..... 3

Board Co-Presidents' Message..... 2

Board of Trustees..... 2

Breman Members ..... 17

Breman Staff ..... 15

Education News..... 4

Exhibitions, Programs, Events ... 7

Tributes..... 11

### SAVE THE DATES!

- **DECEMBER 4, 2 PM**  
Bearing Witness with Miriam Fishkin, Holocaust survivor from Poland
- **JANUARY 29, 2012**  
Art of Gaman opens
- **JUNE 2 - 4**  
Passport to Celebrations, highlighting decorator-designed tables celebrating holidays from around the world.

From September 25, 2011 – January 8, 2012, The Breman will present an exhibition created by the Lied Children’s Discovery Museum in Las Vegas entitled *Torn from Home: My Life as a Refugee*. The exhibition takes young visitors (geared toward 8 – 12 year olds) and adults on an inspiring, hands-on journey into the lives of millions of children who are being forced to flee their homes in conflict regions throughout the world.

A refugee is a person outside of the United States who seeks protection on the grounds that he or she fears persecution in his or her homeland. In most cases, a refugee is someone forced to flee his or her own country because of war or violence.

Interactive areas highlight the journey of children from their own homes to the displacement of a refugee camp. These include **Entrance-Home:** three representative homes of children before they became refugees (Congo, Columbia, Afghanistan); **Losing Home:** maps, portraits, artwork personalizing the story; **Registration:** the registration and food distribution process in a camp; **Refugee Camp:** how shelter, water, bathrooms, hygiene and other basic needs are addressed in a camp, build your own tent, hand-made toys; **Medical Clinic:** the challenge of keeping population healthy; School, the challenges of providing education with limited resources;



**Going Home?:** the average camp stay is nine years. Then what?

Visitors are encouraged to consider: What is a refugee? Why are there refugees and where do they come from? What does “home” mean and why is it so important? How would it feel to be torn from your home and forced to flee in an effort to find safety for you and your family? What are the challenges faced by many refugees?

### Worldwide Refugee Situation

Every part of the world is affected by the plight of refugees. According to the UN High Commissioner for Refugees (UNHCR), war and political repression were responsible for 43.7 million people being displaced from their homes by the end of 2010. The figure comes from a report released by the agency on June 20, World Refugee Day. The number of refugees is the highest in 15 years, and is up 400,000 from the previous year.

Just over half of the refugees are children under age 18, reports Reuters’ AlertNet.

Developing countries shoulder most of the burden of caring for refugees: Pakistan, Iran, and Syria host the majority of refugees. Afghanis make up the largest group of displaced people — 3 million.



*continued on page 9*

The Arbiser Family Theatre

The Blonder Family Heritage Gallery

Ida Pearle & Joseph Cuba  
Community Archives & Genealogy  
Center

The Holocaust Gallery

The Elinor Rosenberg Breman  
Museum Shop

Marlene J. & William A. Schwartz  
Special Exhibitions Gallery

The Lillian & A.J. Weinberg Center  
for Holocaust Education

• • •

**BOARD OF TRUSTEES**  
2011 - 2012

**OFFICERS**

Spring Asher, Co-President

Joyce Shlesinger, Co-President

Howard Fagin, Ph.D., Vice President

Debbie Neese, Vice President

Jerry Rosenberg, Vice President

Michael Woocher, Treasurer

Margie Stern, Secretary

**TRUSTEES**

Miles J. Alexander • Dara Amram

Amy Arogeti • Tom Asher\*

Goldie Traub Bertone

Henry Birnbrey • Joanne Birnbrey

Lois Blonder\* • Elinor R. Breman\*

Judy Cohen • Laura Z. Dinerman\*

Gail H. Evans • R. Peter Fishman\*

Craig Frankel • Carole B. Goldberg\*

Benjamin Hirsch\*

Gerald D. Horowitz • Wayne Lazarus

S. Jarvin Levison\* • Murray Lynn

Michael Merlin • Anthony Montag

Valerie Needle\* • Carol B. Nemo\*

AJ Robinson • Ronald Rosen, M.D.

Arnold Rubenstein, M.D.

Jane Schiff • Marlene J. Schwartz\*

Brian Smooke • George Stern

Judith Taylor • Ronit Walker

Richard Warren

Margaret S. Weiller\*

Norman Zoller\*

\*Emeritus



A MESSAGE FROM

**The Co-Presidents of the Board**

L'Chaim,

**W**e are excited and challenged

to be your co-presidents of The Breman Museum. Our goals are to raise our visibility, increase membership and enhance our museum's Re\$ources.

This is an international year for The Breman. We will visit the world of child refugees in the special exhibition *Torn from Home* and will see the world of resourceful young survivors of today.

In January, the museum will present *The Art of Gamon: Arts and Crafts from the Japanese American Internment Camps, 1942 - 1946*, an amazing exhibition celebrated in *American Craft Magazine*. The exhibition is coming to us from The Smithsonian American Art Museum's Renwick Gallery in Washington, DC.

This programming, well marketed, will bring in visitors and new members. Joanne Birnbrey, our vice president of membership, is leading the charge with the goal of 1800 members.

And to cap off this International Year, a gala fundraiser: "Passport to Celebrations," to take place at the Buckhead Theatre June 2 - 4, 2012, headed up by Debbie Neese, our vice president of events. The event will showcase decorator settings of holiday tables, from Rosh Hashanah to Chinese New Year and other holidays throughout the year. We will offer table setting accessories in our Marketplace. Our goal for the year, \$459,000... 4 + 5 + 9 = Chai!

Please join us. We need your Time, Your Talent and Your Treasure. We can't do it without you.

Love,

Spring and Joyce



A MESSAGE FROM

**The Executive Director**

Dear Friends,

**T**he exhibition that opens our 2011-2012 season, *Torn from*

*Home: My Life as a Refugee*, asks us to consider important, contemporary situations and also gives us the opportunity to look back on the experiences of Europe's Jews leading up to and during the Second World War.

The issues raised in the *Torn from Home* exhibition regard the plight of refugees — people without a country and with few or no resources, who have been forced to flee their homes to escape fighting or human rights violations, and who to escape to another country to find safety.

These issues resonate with those The Breman explores in our core exhibition, *Absence of Humanity: The Holocaust Years*. The Jews of Europe who survived the Holocaust, whether they managed to escape before or shortly after Hitler and the Nazis came to power or, trapped in

Europe, survived in hiding or managed to survive the concentration camps, were refugees.

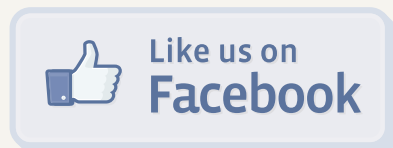
In most cases, the "gates" of the world were closed to Europe's Jews, the world was silent in the face of their plight, and help was largely non-existent.

We look forward to this exhibition encouraging dialogue and thought about today's world population of refugees and how we, as fortunate, caring and compassionate Americans, can act to assist others who are caught in a crisis situation.

We invite you to visit The Breman, tour this special exhibition in the museum's Schwartz Family Gallery, explore our permanent exhibitions, and check out our fabulous website with its ever-growing wealth of information and online exhibitions. We value your support and hope to welcome you soon and often.

Best regards for a peaceful, healthy, safe and prosperous 5772!

Jane



Join the over 800 people who keep up with  
The Breman on Facebook!

Post your opinions on articles, videos  
and happenings!

[facebook.com/thebreman](http://facebook.com/thebreman)



# Hunting for Treasures in Huntsville

By Sandra Berman, Archivist

The first Jews to settle permanently in Huntsville, Alabama, were Morris Bernstein and Robert Herstein, who emigrated from Germany in the 1840s. These two men were the paternal great-grandfathers of Margaret Anne Goldsmith, a Huntsville native and the keeper of her family's legacy.

Margaret Anne left Huntsville for boarding school in 1957 and returned as a permanent resident upon the death of her father, Lawrence Bernstein Goldsmith, Jr., in 1995. Since then she has devoted herself to continuing and enriching the contributions that five generations of her family have made to the growth of that city.

When the staff of The Breman first spoke with Margaret Anne, it was hard to imagine the depth of her collection or the contributions made by one family. To actually understand the significance of the Bernstein-Hertsein-Schiffman-Goldsmith legacy, we knew a trip to Huntsville was in order. Margaret Anne arranged to meet us at the building that she still owns in downtown Huntsville that continues to be the home of I. Schiffman & Co., Inc.

Upon crossing the threshold, one is immersed in the past. The original fixtures, office equipment and furniture are still there, as is the vault that housed the business records of I. Schiffman's commercial and farming properties, automobile and loan businesses as well as the financial and personal papers of family members.

The upstairs of the building has a small apartment and several rooms, where Margaret Anne has displayed the objects, documents, photographs and textiles that give life to her



*Cora Barley with Margaret Anne swimming at the gravel pit on the Goldsmith family farm, c.1945.*

family's story. Included among the items are objects that speak to the day-to-day lives of this particular German-Jewish family, a lifestyle that was mirrored by others in small towns throughout the South.

These possessions, including shaving mugs, snuff boxes, a poker set, and eyeglasses, along with rare documents and photographs dating back to before the Civil War, tell a story that was repeated again and again by Jewish families who peddled and eventually settled in communities much like Huntsville.

The staff of The Breman spent several days with Margaret Anne interviewing her and viewing her collection. Her reminiscences revealed wonderful stories from her childhood. One of the most heartfelt of her memories was her description of her relationship with her nurse, Cora Barley, the black woman who was hired to care for Margaret Anne when she was only nine months old.

Years later, Margaret recounted that when Cora was first hired by her grandmother she was

told, "Now Cora, you will be responsible for not letting the baby cry." Cora replied, "Mrs. Goldsmith, the baby is going to cry as babies do and I might as well turn around right now and go back to the hotel [where she worked as a maid] if you expect me to keep me her from crying." According to Margaret Anne, Cora stayed and her grandmother never questioned her again.

Cora never had children of her own, and the mother-daughter relationship that ensued lasted until Cora's death several years ago when she was in her early 90s.

Margaret Anne's relationship with Cora was indeed special, but not unique. In interview after interview, Jewish southerners have reminisced about the closeness that developed between themselves and the black maids, nurses and cooks who lived and worked in their homes. It was a complicated relationship, one that included love and deep devotion, but one which also respected the cultural morés of the South.

This dichotomy is no better illustrated than by one of the objects that Margaret Anne owns and still holds dear to her heart, "Cora's plate." While Cora was in many ways considered part of the family and was responsible for the care and raising up of Margaret Anne, she still was not given access to the family's dishes or drinking glasses. She used a yellow plate on which she ate every meal.

This was just the way it was in the Jim Crow South, and it was an established southern custom in white homes regardless of religion. While today Margaret Anne is troubled by what the plate represented, she keeps it safe because it reminds her of Cora and the bond that the two of them shared.



*Cora's plate.*

The plate is just one example of the treasures found in Huntsville.

These objects, along with the stories collected by The Breman, will continue to protect and preserve the contributions and the accommodations that Jews throughout the South made as they lived and prospered, and helped to build the communities in which they lived.



*Cora Barley helping Margaret Anne on her wedding day in Huntsville, Alabama, October 19, 1963.*



## The Genocide Prevention Institute — the Next Step for The Breman

by Liliane Kshensky Baxter, Ph.D.  
Director, Weinberg Center for Holocaust Education at The Breman

*The main lesson one can draw from the Holocaust is that one has to fight genocide.*  
—Yehuda Bauer, Holocaust historian

Teachers have been asking us to help their students become more globally engaged, and Holocaust teachers in particular have been asking us to help them respond to their students' desire not be today's "bystanders." Those concerned with human rights — our members and friends — have been stressing our moral duty to treat contemporary mass murders of trapped and helpless civilian populations as we would have wanted the Jews of Europe to have been treated during the Holocaust.

Survivors, again and again, have said that they tell their stories of pain and loss not only to honor family and history, but also so that what happened to them will not happen to others. In response to these voices and the urgency of today's genocide crises, the Breman is proud to introduce the **Genocide Prevention Institute (GPI)**.

This newest initiative builds on The Breman Museum's mission to explore the universal themes of respect for difference, responsible citizenship, human dignity, and community building through the lens of the Jewish experience. These values, central to our Holocaust gallery's signature exhibition, *Absence of Humanity: The Holocaust Years, 1933–1945* and our Holocaust programs, will guide our work as we bring public programs on genocide to our audiences, and educational seminars on genocide and crimes against humanity to our community of teachers, students and life-long learners.

The term "genocide" did not exist before the Holocaust. It was coined in 1943–44 in response to Nazi crimes by Raphael Lemkin, a Polish-Jewish lawyer who fled Nazi-occupied Poland for the United States. The term "genocide" combines the root words *genos* (Greek for family, tribe, or race) and *-cide* (Latin for killing). Other than the Armenian Genocide of 1915, there had been no precedent to Nazi Germany's crime against the Jews, nor a word for the intended murder of every member of a victim group.

In large part due to Lemkin's ceaseless efforts, in 1948, the United Nations Convention on the Prevention and Prosecution of the

Crime of Genocide was adopted, declaring genocide an international crime. But events in Cambodia, Guatemala, Bosnia, Rwanda, Darfur, and elsewhere show that too little has been done to stop the crimes committed in World War II from being repeated again and again. As I write this, the Sudanese government — which has slaughtered 2.5 million defenseless people and displaced millions of others from their homes — is threatening parts of recently independent South Sudan.

According to Yehuda Bauer, Israel's leading Holocaust historian, "One must become committed to an effort to stop or prevent ongoing and future genocides because they are manifestations of the same human illness which caused the Holocaust."

When we understand, as Holocaust scholarship has shown us, that the Holocaust was not inevitable, that it did not occur spontaneously, that it could have been stopped or ameliorated in its earlier stages if there had been a strong-enough organized movement from engaged citizens and governments, then we recognize, along with Lemkin and Bauer, that "the main lesson one can draw from the Holocaust is that one has to fight genocide." One has to fight genocide.

The Genocide Prevention Institute builds on our community's history of anti-genocide work. As one of the founding membership organizations, The Breman supported and helped organize Darfur rallies from 2004–2009 in close partnership with the Darfur Urgent Action Coalition of Georgia (DUACG), which in 2009 evolved into the Georgia Coalition to Prevent Genocide (GC2PG). A leading participant in these efforts, Breman VME Melanie Nelkin, has agreed to be the Founding Chair of the GPI's Advisory Committee which is in the process of being formed.

It seems perfectly logical, as well as extremely fortunate for us, to have Melanie Nelkin's leadership in this venture, since her interest

in genocide began with her involvement as a docent at the Breman. Melanie has continued to serve as a docent while also chairing DUACG and co-chairing GC2PG. In 2009, working with students, teachers, interfaith and non-profit leaders, she led an advocacy campaign that resulted in passage of Georgia State Senate Bill 170, a contract-prohibition bill disqualifying Georgia state contracts with the most problematic companies doing business in Sudan.

Melanie's vision is "to create a permanent anti-genocide constituency. After the Holocaust, we seem to make the diagnosis, but there has rarely been a political cost to inaction or neutrality. The fact is, that genocide is preventable." We couldn't have asked for a more committed, energetic or visionary chair.

The GPI will be launched with two inaugural programs for the public and a special course on genocide for teachers. On Sunday, November 6, at 1 p.m., the public is invited to a panel discussion with genocide survivors moderated

by former Atlanta Mayor Shirley Franklin. Survivors participating will be from Rwanda, Bosnia, Sudan

and the Holocaust. We expect this to be a unique and memorable program.

At 3 p.m., we will screen Daniel Jonah Goldhagen's powerful film *Worse Than War*, the first major documentary to explore the phenomenon of genocide and how we can stop it, based on his book of the same name.

"Since the beginning of the twentieth century," writes Goldhagen, "mass murderers have killed more, perhaps many more, than 100 million people — a much greater number than have died as a consequence of conventional military operations. So genocide is, by this fundamental measure, worse than war."

Best known for his magisterial study, *Hitler's Willing Executioners*, Goldhagen's film examines examples of genocide from every continent and from every angle.

*continued on page 6*



**What I experienced this week FAR exceeded my expectations. It was truly life changing.**

**— Jennifer Loveless  
Crossroads Christian  
School, Fayetteville, GA**

**This course was amazing due to the kindness and resources given by everyone at the museum! The content was incredible. I have learned so much and will pass on what I have learned to my students and others. Thank You!**

**— Robert McLaughlin  
Huntington Middle School,  
Bonaire, GA**

**This is by far the best workshop of this kind (Holocaust for teachers) I have attended. It was fantastic how well organized (keeping on topic and on schedule) it was and I really appreciated the interdisciplinary approach**

**— Karen Burton  
Kennesaw State University  
(Graduate student)**

**I want to say that as a Christian, I feel a great sadness when I see and understand what happened but I so much appreciated the hospitality and graciousness of the Jewish community in this class. I felt accepted and hopefully I can find some level of forgiveness for the past of those of my faith.**

**— Hannah May  
East River Ministries,  
Lynn Haven, FL**



## 20th Annual Birnbaum Summer Institute on Teaching the Holocaust

*by Sally Levine, Specialist for Teacher and Curriculum Development*

**O**n June 12th, 2011, 50 educators, including classroom teachers, lifelong learners and Volunteer Museum Educators, began a five-and-one-half-day journey filled with historical information, personal testimony and educational strategies and resources designed to strengthen their skills in teaching about the Holocaust. As in the past two years, scholarships for teachers were provided by the Anne and Bernard A. Birnbaum Holocaust Education Fund, in loving memory of Bernard A. Birnbaum.

Dr. Lili Baxter, Director of Education at the Breman, has developed the Summer Institute into the foremost teacher workshop on the Holocaust in the State of Georgia. The course is accredited by the Georgia Department of Education and teachers who complete the course receive Professional Learning Units.

The Institute began with a powerful presentation by Breman Volunteer Museum Educator and speaker, Paula Gris. Paula's testimony was part of the public Breman program, Bearing Witness, which generally takes place on the first Sunday of each month.

The agenda for the rest of the week of the Summer Institute gave participants opportunities to immerse themselves in the study of this historical period through moving testimonies by Holocaust survivors, lectures by local scholars and teachers, overviews of history, literature, art and music of the period, and examination of primary sources and Breman archival materials.



*Survivor Tosia Schneider relating her experiences during the Holocaust.*

Breman staff members were an integral part of the seminar, highlighting their areas of expertise. Dr. Lili Baxter provided an introduction to each day's agenda to assist teachers in processing the tremendous amount of material to which they were exposed.

As the Specialist for Teacher and Curriculum Development, it was my responsibility to give

teachers the tools and strategies for translating this material into age appropriate, meaningful lessons for their students.

Stephanie McMahon Kaye, Desk for International Seminars in English and Coordinator of International Seminars at the School for Holocaust Studies at Yad Vashem, Jerusalem, Israel, came to The Breman for the second consecutive year to share her expertise in Holocaust history and pedagogy. She helped teachers explore the *Echoes and Reflections* Holocaust curriculum produced by Yad Vashem, the Shoah Foundation and the Anti-Defamation League. Teachers were given free copies of this valuable resource.



*Eva Baron, sharing her story of survival in Auschwitz.*



*Archivist Sandy Berman (on right) showing original materials to Institute participants.*

Each year, at our Summer Institutes, we try new ways to integrate technology into the program. This year, for the first time, instead of receiving large binders filled with resource and reference material, teachers were given a branded Breman Flash drive loaded with resources. Teachers were also given the opportunity to download the PowerPoint presentations given by the lecturers onto their Flash drives. This innovation allowed us to give teachers more material than ever before and derive satisfaction from knowing that we were being environmentally responsible.

As we do every year, at the close of the Summer Institute, teachers were asked to share their reactions to the presentations and explore how the weeklong experience had impacted them and would inform their teaching. The comments on the left, from these evaluations, reveal the impact of the course on educators and the work they do.

**Save the dates:** the next Birnbaum Summer Institute is scheduled for June 10 – 15, 2012.

## GPI Inauguration

continued from page 4

“We need to start over and rethink their every aspect,” he asserts. “What they are. How they begin. How and why they end. Why they unfold as they do. Why victims are chosen. Why killers kill. And, most of all, what we can do to stop them.” We are planning for an animated and thought-provoking afternoon. Check for details on our website, [www.thebreman.org](http://www.thebreman.org).

Our program for teachers, “Confronting Genocide,” will run for two days, November 6, 12:30-5:30 p.m., and November 7, 9:30 a.m. – 4:30 p.m. To the best of our knowledge, for the first time in Georgia, teachers will gather to learn about the genocides of our last two centuries. They will study this phenomenon through the lessons of the Holocaust, develop a working vocabulary of its legal and moral terrain, be able to recognize the warning signs, review curricula and resources, learn what Georgia standards are met by the subject, what organizations their students can join, and what clubs their schools can sponsor.

Teachers will earn 1 PLU credit for ten contact hours, and their schools will receive stipends for substitute teachers so the selected teachers can attend. Information about the stipends, scholarships and course content is online on the museum’s website. For more information, teachers may contact me at [lbaxter@thebreman.org](mailto:lbaxter@thebreman.org), 404-870-1872, or Sally Levine, [slevine@thebreman.org](mailto:slevine@thebreman.org), 678-222-3700. To register, please go to [www.thebreman.org/course](http://www.thebreman.org/course).

So, here we are at the beginning. The Genocide Prevention Institute is a work-in-progress welcoming your input and support. Please join us on November 6th.

*Wherever and whenever [we become aware of] a project similar, or close to similar, to that project that Hitler had for the Jews and some others, we must immediately do everything we can to stop it: to disarm the perpetrator-to-be, to denounce it first, and to create a world in which their project will not come to fruition.*

—Elie Wiesel

## Summer Institute Participant “Walks the Walk”

by Mike Weinroth

The Breman’s 2011 Birnbaum Summer Institute attracted more teachers from out of Georgia than ever. One such teacher is Ken Wiggins. Ken has been a teacher at Ranburne High School in Ranburne, Alabama, for five years.

According to a recent census, Ranburne is just shy of 480 residents. Like many teachers who participate in the Summer Institutes,



Students of Ken Wiggins.

Ken has a passion for sharing accurate, historical content with his students, who might otherwise never know of the horrific events that took place in Europe from 1933 to 1945. His students spend weeks on the Holocaust and he goes to great lengths to help them try and understand the plight of Jews and other targeted groups.

Ken also promotes any opportunity that will expose his students to a world outside of Ranburne. So, that Ken took it upon himself to get 70 of his students and 30 of their parents to Jacksonville State University for the university’s

annual Day of Remembrance on April 7 was not all that unusual. What was unusual, and added to the students’ presence, was that they were all wearing T-shirts that they had each purchased with the Yellow Star and the words “Ranburne Remembers” on the front.

The Breman Summer Institute is not Ken’s only experience in Holocaust studies. Ken has been a participant in programs around the United States that fully explore the catastrophic events of the Holocaust. For example, in June, Ken flew to New York to attend a prestigious program at Columbia University as a Lerner Fellow.

When financial assistance is not available, Ken pays for these opportunities out of his own pocket. What motivates this married father of two to make personal sacrifices to

learn as much as he can about a topic that is not typically discussed in Ranburne, Alabama, or in many communities?

“I believe what I do is important because my students need to understand there is life outside of Ranburne, Alabama, and I want them to understand that history repeats itself if we allow it by being ignorant of the past.”

The Breman salutes Ken Wiggins and the other participants of this summer’s 20th Annual Birnbaum Summer Institute.



Ranburne High School students talking with Breman Holocaust speaker Herbert Kohn at Jacksonville State University on April 7, after his presentation to an audience of 500 people.

# Exhibitions, Programs & Events

All public programs take place on Sundays at 2 p.m. unless otherwise stated.



Through January 8, 2012



*Torn From Home* was created by the Lied Discovery Children's Museum in Las Vegas with generous support from Pam and Pierre Omidyar, and tours nationally thanks to a grant from Unbound Philanthropy.



Arts and Crafts From  
The Japanese American Internment Camps  
1942~1946

January 29 - May 31, 2012



The Breman is open:  
Monday - Thursday, 10 a.m. - 5 p.m.  
Friday, 10 a.m. - 3 p.m.  
Sunday, 1 - 5 p.m.  
Closed Saturday  
Phone: 678-222-3700



**SUNDAY, OCTOBER 16**

Film screening of "Into the Arms of Strangers: Stories of the Kindertransport" (running time 117 min.)  
Oscar winner, Best Documentary Feature of 2000

Eleanor Ringel-Cater will introduce this film and there will be a special recognition of Breman Board Trustees, Henry Birnbrey and Benjamin Hirsch, who were sent from Germany as children to live with foster families in Atlanta.



**SUNDAY, OCTOBER 23**

**Rethinking the Melting Pot: Immigrants, Refugees, and the New Face of Georgia**

Tom Baxter, editor of the *Southern Political Report* and former chief political correspondent of the *Atlanta Journal-Constitution*, will moderate a panel discussion.



**SUNDAY, NOVEMBER 6**

**Join The Breman for the Inaugural Launch of the Genocide Prevention Institute**



**1 p.m.**

**"Never Again! Genocide Today"**

Former Atlanta Mayor Shirley Franklin will moderate a panel of genocide survivors from Rwanda, Bosnia, Sudan and the Holocaust.

**3 p.m.**

Film screening of David Jonah Goldhagen's 2009 documentary, "Worse than War" (running time 2 hours)

How and why do genocides start? Why do the perpetrators kill? Why has intervention rarely occurred in a timely manner?



**SUNDAY, DECEMBER 4**

**Bearing Witness**

Miriam Fishkin, Holocaust survivor from Poland, shares her unforgettable personal history and its lessons for today.



**SUNDAY, DECEMBER 18, 3 P.M.**

**Melissa Fay Greene - RESCHEDULED Book Talk and Signing**

**No Biking in the House Without a Helmet**

The Breman is thrilled to hear about a very unique "Modern Family": Melissa Fay Greene and husband Don Samuel's household of nine children. "We so loved raising our four children by birth, we didn't want to stop. When the clock started to run down on the home team, we brought in ringers." They adopted five children from foreign orphanages. Hear how Ms. Greene chronicles the good and the bad with great humor in her latest book, *No Biking in the House Without a Helmet*, a unique 21st-century family as it wobbles between disaster and joy.

## Markings: A Few Words of Reflection and Appreciation

by Norman Zoller, *Outgoing Board President*

*The following has been taken from an article that can be read in its entirety at [www.thebreman.org/zoller](http://www.thebreman.org/zoller).*

**N**early two years have passed since I began my term as president of the Board of Trustees of the Breman Jewish Heritage and Holocaust Museum. A number of programs, events, and people stand out that I will always remember. The Breman is blessed with some remarkable volunteers and staff.

Several programs—some tried and true, some new—were particularly satisfying. First was the major fundraiser in February 2010 honoring Jewish military service members and veterans. During that evening we also honored the public-spirited service and philanthropy of the Breman family, especially Elinor Angel Rosenberg Breman, who has faithfully carried on the legacy of her beloved husband, Bill. We remembered him, we honored them both, and we thanked the Breman and Rosenberg families for all they have done and continue to do for our community.

The Holocaust Survivors committee under Co-Chairs Eve Goldstein and George Stern took the initiative in producing high-quality video recordings that have already won awards, and in arranging for professional photographs of our survivors to be taken. That committee has also taken the lead in conducting instructional programs on how to write one's own ethical will.

Much thanks and appreciation goes to our splendid staff. Although we pay them for what they do, they do far more for us than the money they earn, and they deserve our abiding gratitude.

I would be remiss if I did not mention our superb archives. From all over Atlanta—indeed the Southeast—people have entrusted The Breman with many individual and family heirlooms. Some have been on display from time to time, but we safeguard all of them. We remain committed to protecting these treasures fully, and we welcome gifts you may have that perpetuate

*continued on page 14*

## With Deep Appreciation to the Following for Major Support

- Judy & Aaron Alembik, for support of The Breman Museum  
Pola and Samuel Arbiser, for support of the Summer Institute for Teaching the Holocaust  
Jim Breman, for support of The Breman Museum  
Elaine & Miles Alexander & Family, for support of the Cuba Archives  
Annie Birnbaum & Family, to underwrite the Summer Institute for Teaching the Holocaust for the next five years  
Anonymous, for the establishment of the Institute for the Prevention of Genocide Studies at The Breman  
Elinor Breman, for underwriting The Breman's newsletter in honor of Bill Breman  
City of Atlanta Office of Cultural Affairs, for exhibition support  
The Coca-Cola Company, for exhibition sponsorship  
Cartoon Network, for exhibition sponsorship  
Judith & Elliott Cohen, for support of the Cuba Archives  
The Rae Alice and Bernard Cohen Memorial Endowment Fund, for support of the Cuba Archives  
The Marshall & Laura Dinerman Family Foundation, for support of the Cuba Archives  
Marilyn & Sam Eckstein, for support of the Cuba Archives  
Fulton County Arts Council, for program support  
Joan & George\* Goldman, for support of the Cuba Archives  
The Heyman Family Foundation, for support of the Archives  
The Georgia Humanities Council, for support of Bearing Witness  
The Home Depot Foundation Building Community Award  
Institute of Museum and Library Services, for support of the Cuba Archives  
Jewish Federation of Columbus, Georgia, for support of the Cuba Archives  
The Charles & Esther Lee Kimerling Charitable Foundation, for support of the Alabama Project  
Sol Kimerling, for support of the Alabama Project  
A Legendary Event, for the fabulous ambiance of the Seuss Gala  
Metropolitan Atlanta Arts Fund, for accreditation & operations  
Sara Giles Moore Foundation, for traveling educational trunks  
Paradies Shops, for the redesign of the Elinor Rosenberg Breman Museum Shop  
The Rich Foundation, for exhibition and marketing support  
Jerry & Dulcy Rosenberg and Family, for major support in honor of Elinor Breman of the Seuss exhibition, the redesign of The Breman's Website and development of the online exhibition *New Lives: Coming to America*  
Madelyn\* & Herbert Shessel, for support of the Cuba Archives  
Stanley Srochi, for support of the digitization and indexing of the *Southern Israelite*  
Judith & Mark Taylor, for support of the Esther and Herbert Taylor Oral History Project of The Cuba Archives

*Every effort was made to ensure the accuracy of this listing. We apologize for any errors or omissions.*

*\*z"l, may their memory be for a blessing*

Next in absolute numbers are Iraqis, Somalis, and Congolese, reflecting those nations' ongoing conflicts.

War continues to pressure people to flee. This year strife in Africa and the Middle East has pushed thousands of families from their homes.

One in every 170 persons in the world has been uprooted by war. This is the largest category of vulnerable people in the world. About one third of them are officially

recognized refugees because they have crossed an international border. The other two-thirds are so-called

internally displaced persons, or IDPs, because they are still within their own country. Of the world's 12 million or so refugees, about 3.2 million are in Africa. In addition, Africa has about half of the world's 25 million IDPs.

80 percent of the world's refugees are women and children who are more vulnerable to their unstable conditions.

### Refugees in the United States

Since 1980, when formal U.S. refugee resettlement began, 1.8 million refugees have been invited to live in the United States, with recent annual refugee arrivals typically falling between 40,000 to 75,000. The number of individuals granted asylum in the U.S. over the past decade has ranged from a high of 39,000 in 2001 to just below 23,000 in 2008.

About 35 to 40 percent of refugees resettled in the U.S. are children.

The vast majority of refugee children—about 95%—resettle in the U.S.

with their parents. About five percent of refugee children are resettled with relatives or other adults who have agreed to care for the children, while about 100 to 200 children per year are placed into specialized foster care through the Unaccompanied Refugee Minor Program

Hundreds of refugees come to Atlanta each year. They are helped in the resettlement process by a network of refugee aid organizations that offer everything from household goods to job counseling to English language classes and many other services.

---

**One in every 170 persons in the world has been uprooted by war.**

---

## Breman Staff Provide Resources to Cobb County Social Studies Teachers

*by Michael Weinroth*

Sally Levine and I were invited to offer a break-out session during a Cobb County Schools in-service, held on August 10, 2011. Nearly 640 social studies teachers attended the in-service, which was held at Walton High School.

During our session, which was presented three times, we offered information about the museum's exhibitions, educational services and materials, including Holocaust teaching content, which parallels the State of Georgia's performance standards.

In addition, at each of the sessions, seasoned Holocaust speaker, Herbert Kohn, made a brief presentation about his experiences and exhorted his audience to teach the painful lessons of the past in order to instill respect for difference and to make students aware of the consequences of being a bystander.

The Breman's Holocaust Education Teaching Trunks, one for middle school students and one suited for high school, are currently on loan to

Cobb County Public Schools as well. Thanks to Social Studies Coordinator JoAnn Wood, the materials are now being displayed in the social studies department central office so that teachers from all over the county can check out the materials that are most appropriate for their classrooms.

Department Secretary Donnie Thurmond has played a major role in terms of making the materials accessible to teachers and using personal time to purchase bins to accommodate those materials. Ms. Thurmond has also agreed to check materials out to teachers and send them by school courier to teachers all over the county and to keep an accurate inventory. After a stay in Cobb, the trunks will be sent to another school district for the second half of the school year.

The Breman greatly appreciates the support of Cobb County Schools and their interest in providing accurate information about the Holocaust to students in grades 5-12.

### Torn from Home Program Partners

*Torn From Home* offers The Breman the opportunity to partner with many aid organizations and various local organizations representing the multi-ethnic communities that make up the fabric of Atlanta and thus, recognize our local ethnic populations.

#### PROGRAM PARTNERS INCLUDE:

The Global Village Project, Inc., dba The Global Village School

American Jewish Committee Division of Family and Childrens Services

Fugees Family

Jewish Family & Career Services

Lutheran Services of Georgia

National Center for Civil and Human Rights

Refugee Resettlement and Immigration Services of Atlanta

Shirazi Law Group, Inc. Immigration and Nationality Law

World Affairs Council of Atlanta – Young Leaders

*Torn From Home* was created by the Lied Discovery Children's Museum in Las Vegas with generous support from Pam and Pierre Omidyar, and tours nationally thanks to a grant from Unbound Philanthropy.

This exhibition was developed in collaboration with many international and domestic aid organizations including the UN High Commissioner for Refugees (UNHCR), World Food Programme, International Rescue Committee, Save the Children, and World Vision.

# Torn From Home: Jewish Children of the Holocaust, Special Exhibition at The Breman, On View Through January 8, 2012

*“Fifty thousand children of school age must be taken out of Germany. Five thousand children are ready.”*

Cecilia Razovsky,  
Executive Secretary of the German-Jewish  
Children’s Aid, Inc.  
January 24, 1936

In the spring of 1933, only a few months after Hitler’s rise to power, a number of Jewish community organizations began an effort to help German-Jewish children leave Germany. These children were to be sent to foster families in England and the United States and were to be reunited with their families once the Nazi threat was over. The agency that was founded to mobilize the effort in the United States was the German-Jewish Children’s Aid, Inc.

This organization was responsible for posting bonds for the refugee children, for preventing them from becoming public charges, for arranging their transfer to the United States and for caring for them after their arrival.

One of the key figures in this effort was Cecilia Razovsky, who was associate director of the National Council of Jewish Women (NCJW), executive director of the National Coordinating Committee for German-Jewish Relief and executive secretary of the German-Jewish Children’s Aid, Inc. Razovsky, along with Lotte Marcuse, placement director for the agency, and Dr. Ernest Papenek, a one-time OSE (Oeuvre de Secour aux Enfants — a health and child care organization) educator in France, were determined to bring as many children as possible to the safe haven of the United States.

These organizations worked alongside local organizations to create a bureaucracy that could help with the affidavit process, placement, and physical and emotional

support for the children. In Birmingham, Alabama, the local chapter of the NCJW helped those torn from their families to resettle in homes. In Atlanta, Georgia, the Jewish Children’s Service (formerly the Hebrew Orphans’ Home) and NCJW worked together.

The efforts, however, would prove formidable. In 1924, the United States government passed its second law restricting immigration based on nationality. The

Immigration Act established quotas designed to reduce immigration from southern and eastern Europe (especially Jews and Italians) and prohibited the admission of “aliens ineligible to citizenship” which meant all Asians, including wives of Asians already in the United States.

For the first time in history, immigration dramatically decreased. In 1929, Congress made annual immigration quotas permanent.

Before 1929, 51,227 persons from Germany would have been allowed entry into the United States; after 1929, the number was reduced to permit only 25,957 individuals to enter. The lucky few would then have to complete the multitude of

forms required by the Nazi government permitting departure, the complicated application for an American visa needed by the State Department, all while trying to locate a family member or caring stranger willing to sign an affidavit of support.

In addition to these obstacles, in 1933, the same year as Adolf Hitler’s ascendancy as chancellor of Germany, 25.2 percent of American workers were unemployed. Jewish agencies grappled with the dilemma of whether it



*Immigration document of Gerhardt (Gary) Linz. Gary and his younger brother, Werner, lived with a Jewish family in Albany, Georgia.*

appeared un-American to lobby Congress to ease immigration restrictions when these same immigrants might contend for American jobs that were in short supply.

The safer course for Jews, many of whom were worried about their own images as loyal citizens, was to try and lobby for the immigration of children, a group that might soften the heart-strings of the American public while not jeopardizing American jobs.

Ultimately, approximately 1000 children arrived in the United States prior to the United States’ entry into World War II. These children were among the lucky ones. They survived, along with thousands who went to England, while 1,500,000 other Jewish children perished.

Their stories of survival, resettlement and life in America are testimonies to the courage and resolve of the children, their parents who bravely decided to let them leave, and to the multitude of organizations and case workers who led them safely to America’s shores.



*George Prager with his dog, Frisky, in Atlanta, 1940.*



*Henry Birnbrey, aboard ship, on his way to America and then Atlanta from Dortmund, Germany, 1938.*

# Thank You for Remembering Special People & Occasions With a Tribute Gift to The Breman

*To make a tribute gift, please use the enclosed envelope or contact Judy Schancupp at 678-222-3707 or [jschancupp@thebreman.org](mailto:jschancupp@thebreman.org).  
Gifts may also be made securely through our website, [www.thebreman.org](http://www.thebreman.org).*

*Tributes listed were received between February 15 and September 15, 2011. Every effort has been made to ensure the accuracy of all information; we apologize for any errors.*

## **MAZEL TOV!**

Sandy & Davis Abrams, in honor of their 50<sup>th</sup> anniversary, from Barbara & Dick Planer, Rosalind Taranto  
 In honor of Pola & Sam Arbiser, from the Board and Staff of The Breman  
 In honor of Beth Arogeti, for her service as a Trustee, from The Board and Staff of The Breman  
 Robert Arogeti, in honor of his birthday, from Anta & Mendel Romm  
 Spring Asher, in honor of becoming co-president of The Breman Board of Trustees, from Penny Berk, Anta & Mendel Romm  
 In honor of Judi Ayal, from Elizabeth Bagby  
 In honor of George Birnbaum, from Annie Birnbaum  
 Shirley Blaine, in honor of her birthday, from Carole Goldberg  
 In honor of Marvin Botnick, from Anta & Mendel Romm  
 Miriam & Marvin Botnick, in honor of their grandson's becoming a Bar Mitzvah, from Anta & Mendel Romm  
 In honor and in support of The Breman, from Shirley & Arnold Friedman, Matile Ginburg, Edward Halperin, Tilly & Benjamin Joffe, Frances & Herbert Kohn, Billi Marcus  
 In support of The Breman's Birnbaum Summer Institute for Teaching the Holocaust, Pola & Sam Arbiser, Leonard Greenstein  
 In honor of Breman Volunteer Museum Educators Bonnie Aronin, Joan Schwartz and Rosalind Taranto, from Floyd County Schools teacher Sam Jones  
 Suzan Brouman, in honor of her birthday, from Sheri & Steve Labovitz  
 Elliott Cohen, in honor of his 75<sup>th</sup> birthday, from Carole Goldberg  
 Judith & Elliot Cohen, in honor of their 50<sup>th</sup> wedding anniversary, from Carole Goldberg  
 In honor of Sam Coolik, for his service as a Trustee, from The Board and Staff of The Breman  
 Debbie Dermer, in honor of her big birthday, from Sheri & Steve Labovitz  
 Judy & Jerry Dubrof, in honor of their 50<sup>th</sup> anniversary, from Joyce & Sonny Shlesinger  
 Leonard Edlin, in honor of his 90<sup>th</sup> birthday, from Barbara Krinsky  
 Reanna and Lonnie Edlin, in honor of their B'nai Mitzvah, from Dr. & Mrs. Perry Brickman  
 In honor of Clara Feldman, from Erna & Larry Martino  
 David & Jan Finer, in honor of David's receipt of the Maimonides Award, from Shirley & Perry Brickman  
 Jack Freedman, in honor of his 90<sup>th</sup> birthday, from Judy & Joel Schancupp  
 Eva Friedlander, in honor of her 90<sup>th</sup> birthday, from Ruth Einstein, Cheryl Eisenberg  
 In honor of Eve Goldstein, for her service as a Trustee, from the Board and Staff of The Breman  
 In honor of Dr. Bob Halper, from Sheri & Steve Labovitz  
 In honor of Guenther Hecht, from Jennie & Macy Moret  
 Mrs. Joel Hecht, in honor of her birthday, from the Cary Rodins and the Ted Marcuses  
 Arnold Holzer, in honor of his birthday, from Anta & Mendel Romm  
 Gay Joel, in honor of her 75<sup>th</sup> birthday, from Carole Goldberg  
 Dr. Norman Kalmin, in honor of his birthday, from Sara Ghitis  
 In honor of Dr. Alan Kaplan, for his service as a Trustee, from The Board and Staff of The Breman  
 David Kuniansky, in honor of the birth of his grandson, from Sheri & Steve Labovitz

In honor of Carol & Robert Lazerson, from Dr. & Mrs. George Warsaw  
 Noah Levine, in honor of his birthday, from Marsha & André Kessler, June & Jack Locke  
 In honor of Noah & Berna Levine, from Jane & Bob Leavey  
 Dr. Alan Lippitt, in honor of his birthday, from Gloria Frisch  
 In honor of Murray Lynn, from Judy & Aaron Alembik  
 Arlene Manning, in honor of her birthday, from Annie Birnbaum  
 Jim Paradies, in honor of his birthday, from Anta & Mendel Romm  
 Michael Plasker, in honor of his daughter's wedding, from Sheri & Steven Labovitz  
 In honor of Pat Pugrant, for her presentation of the Women of Valor Legacy Quilt



*The golden wedding anniversary of Hannchen Levi Wertheim and Herz Wertheim, Angenrod, Germany, 1928. Mathilda Wertheim (Stein) is first on the left in the back row.*

Barbara & Maury Riff, in honor of their 25<sup>th</sup> wedding anniversary, from Lois Blonder, Carole Goldberg  
 In honor of Sidney Rodbell, for his service as a Trustee, from the Board and Staff of The Breman  
 Mr. & Mrs. Steve Selig, in honor of their granddaughter's Bat Mitzvah, from Sheri & Steve Labovitz  
 Larry Sheron, in honor of his birthday, from Annie Birnbaum  
 In honor of Marion Sheron, from Annie Birnbaum  
 Joyce Shlesinger, in honor of becoming co-president of The Breman Board of Trustees, from Penny Berk, Anta & Mendel Romm  
 Joyce Shlesinger, in honor of the graduation of her grandchildren, from Susan & Richard Stern  
 Marilyn Shubin, in honor of her birthday, from Shirley Wender  
 Marilyn & Josh Shubin, in honor of their 60<sup>th</sup> anniversary, from Lois Blonder, Shirley Wender

*continued on page 12*

# Tributes continued from page 11

Rosalie Silberman, in honor of her birthday, from Annie Birnbaum  
In honor of Carla Silver, for her service as a Trustee, from the Board and Staff of The Breman  
Helen Spiegel, in honor of her birthday, from Bonnie Beerman  
Helen & Frank Spiegel, in honor of their 65<sup>th</sup> anniversary, from Bonnie Beerman, the Board and Staff of The Breman, Sylvia & Werner Spiegel, Rosalind Taranto  
Marlene & Gary Super, in honor of Chloe's graduation with honors, from Jane & Bob Leavey  
In honor of Chuck Taylor, for his service as a Trustee, from the Board and Staff of The Breman  
In honor of their parents, Aviva & Mort Waitzman, from Sherri & Bill Bornstein  
Mr. & Mrs. Ben Walker, in honor of their granddaughter's Bat Mitzvah, from Bonnie Aronin  
In honor of Margaret Weiller, from Barbara & Leonard Bock  
In honor of Sue & John Weiland, from Judith & Mark Taylor  
Senator David Weinstein, in honor of his 75<sup>th</sup> birthday, from Ramon & Jody Franco  
Shirley Wender, in honor of her birthday, from Carole Goldberg  
Barbara Ziff, in honor of her big birthday, from Sheri & Steve Labovitz

## BEST WISHES FOR A SPEEDY RECOVERY TO...

Barbara Balsler, from Carole Goldberg  
Dr. & Mrs. Maxwell Eidex, for Clara Shoening, from Pat & Jack Balsler  
Barbara Eisenberg, from Carole Goldberg  
Milton Frank, from Pat & Jack Balsler  
Lala Green, from Shirley & Perry Brickman  
Rabbi Robert Ichay, from Annie Birnbaum & Natalie Fisch  
Tilly Joffe, from Karen & Steven Goldstein  
André Kessler, from the VMEs and Staff of The Breman, Judy & Ronnie Cohen, Howard Fagin  
Mr. & Mrs. Rick Lenner, for Gay, from Sheri & Steve Labovitz  
Herbert Kohn, from the Board, Staff and VMEs of The Breman; Judy Schancupp; Linda & Michael Weinroth  
Liz Levine, from Ray Ann Kremer & George Shapiro  
Bob & Pat Pugrant, from Jane & Bob Leavey  
Pat Pugrant, from Judy & Joel Schancupp, Rosalind Taranto, the Staff and VMEs of The Breman  
George Rishfield, from the Volunteer Museum Educators  
Mendel Romm, from the Staff of The Breman, Carole Goldberg, Barbara & Alan Smith  
Mathew Sikorski, from Judy Schancupp, Linda & Michael Weinroth  
Rosalie Silberman, from Annie Birnbaum  
Saba Silverman, from the Board, Staff and VMEs of The Breman, Judy Cohen, Judy & Barry Frankel  
Dr. Mathew Sikorski, from the Volunteer Museum Educators of The Breman  
Helen Spiegel, from the Board and Staff of The Breman  
Rabbi Alvin Sugarman, from Penny Berk, Anta & Mendel Romm  
Margaret Weiller, from Jeanette Arogeti, Carole Goldberg, Jane & Bob Leavey, Arlene & Mac Strauss  
Drew Zoller, from Judge Phyllis Kravitch  
Harriet & Norman Zoller, for their son, Drew, from the Board, Staff and VMEs of The Breman; Leigh Hurt & Larry; Jane Schiff & Lon Gratz; Rosalind Taranto

## MEMORIAL TRIBUTES/ CONDOLENCES TO...

Sandy Abrams, in memory of her brother, Marvin Isenberg, from Goldie & Lou Bertone  
Sandy & Davis Abrams, in memory of Sandy's sister, Rozzie, from Carole Goldberg, Barbara & Dick Planer, Rosalind Taranto

Edna Adler and sons, in memory of husband and father, Lou Adler, from Jacquie & Ben Hirsch  
Lili Kshensky Baxter, in memory of her mother, Bertha Kshensky, from Rhona Albright; Irene Basis; Eva & Gary Beldick; Martha Berlin; Sandy & Ozzie Berman; Goldie & Lou Bertone; Shirlye & Henry Birnbrey; Manuela Bornstein; the Board, Staff & VMEs of The Breman; Perry & Shirley Brickman; Nancy Broudy; Shelley Buxbaum; Judy & Ronnie Cohen; Anita & Max Eidex; Howard Fagin; Carole Goldberg; Doris & Martin Goldstein; Eve & Joel Goldstein; Kim Goodfriend; Ruth & Neil Hilsen; Pearlann & Jerry Horowitz; Debbie James; Charlotte Janis; Marianna Kaufman; André & Marsha Kessler; Frances & Herbert Kohn; Jane & Bob Leavey; Ruth Levison; Cheri Levitan; Eve Mannes; Shirley Michalove; Jennie & Macy Moret; Melanie Nelkin; Shirley Osterneck; Nancy Pollard; Joan Pressman; Judy & Joel Schancupp; Jane Schiff & Lon Gratz; Joyce Shlesinger; Tosia & Fred Schneider; Carla Silver; Sylvia & Werner Spiegel; Rosalind Taranto; Linda & Michael Weinroth  
Lili & Tom Baxter, in memory of Tom's brother, Jack Baxter, from the Board, Staff and VMEs of The Breman, Judy & Ronnie Cohen, Rosalind Taranto, Linda & Michael Weinroth  
Cory & Alan Begner, in memory of Robert Goldstein, from Goldie & Lou Bertone  
Bernice Bennett & Family, in memory of Jack Bennett, from Harriet Shind and Family  
Julius Berman, in memory of his wife, Joanne Berman, from Jeanette Arogeti, Polly Kaplan  
Mr. & Mrs. Lester Breen, in memory of Lester's mother, Rebecca Breen, from Shirley & Perry Brickman  
In memory of Rebecca Breen, from Barbara & Richard Planer  
Gregory Caplan, in memory of his grandfather, Meyer Levy, from Jane & Bob Leavey  
Sandra Caplan, in memory of her father, Meyer Levy, from Jane & Bob Leavey  
Sam Carson, in memory of his sister, Gertrude Levy, from Jacquie & Ben Hirsch  
Tilda Cohen, in memory of husband, Leonard Cohen, from Rosine Sauvage  
Bonnie & Leslie Cohn, in memory of Janet Ann Cohn, from Goldie & Lou Bertone  
Gail Cohn & Family, in memory of her mother, Janet Ann Cohn, from The Board and Staff of The Breman, Ray Ann Kremer & George Shapiro, Eve Mannes, Rosalind Taranto  
Judy Cone, in memory of her husband, Edward Cone, from Judy & Ronnie Cohen, Judy & Joel Schancupp  
Phil Dietz, in memory of his sister, Babe Dambrov, from Henrietta Gilbert  
Iris & Bruce Feinberg, in memory of Bruce's father, Colman Isaac Feinberg, from Jane Schiff & Lon Gratz  
Robert Feldberg & Family, in memory of Cynthia Feldberg, from Harriet Shind  
Rosi Fiedotin, in memory of her mother, from Carole Goldberg  
Jody Franco & Family, in memory of her mother, Rebecca Breen, from Lois Blonder, Shirley & Perry Brickman  
Debbie Friedman, in memory of her father, Albert Vinocur, from Leanne & Howard Englander



*Gravestone of Washington J. Solomon in the Gordon City, Georgia, Cemetery. (Spelled "Solomen" on the gravestone.) He was a Confederate soldier and was promoted to First Lieutenant on September 1, 1861. He was wounded at Fredericksburg, Virginia on December 13, 1862. He died of his wounds at Richmond, Virginia, on December 18, 1862.*

*continued on page 15*

# The Art of Gaman: Arts and Crafts From the Japanese American Internment Camps, 1942 – 1946

At THE BREMAN: JANUARY 29 – MAY 31, 2012

In 1942, amidst the country's climate of wartime hysteria and racism, President Franklin D. Roosevelt signed Executive Order 9066, which led to the incarceration of 120,000 Japanese Americans, including men, women and children, the elderly and the infirm, for the duration of the war.

The evacuation affected the entire Japanese American population on the West Coast, two-thirds of whom were American citizens. Allowed only what they could carry, they were given just a few days to settle their affairs and report to assembly centers.

Businesses were lost, personal property was stolen or vandalized, and lives were shattered.

Imprisoned in remote camps surrounded by barbed wire and guarded by soldiers with machine guns, the internees sought solace in art.

Coming to The Breman from the Smithsonian American Art Museum's Renwick Gallery, *The Art of Gaman* showcases an amazing variety of imaginative, graceful and functional objects created with few tools from discarded and indigenous raw materials.

The Japanese word *gaman* means enduring the seemingly unbearable with patience and dignity. The art was created by the internees — most of whom had no previous artistic experience — as an essential activity that would provide simple creature comforts and emotional survival.



Artist unidentified, *Interned at Jerome, Arkansas, Model Ship, Wood, scrap metal, wire, thread, paint, screws, nails.* Collection of the National Japanese American Historical Society.

The art is testimony to the persistence and the resilience of individuals living under inhumane conditions. It recognizes the internees as people with personalities, with skills and with hope.

Featuring objects painstakingly gathered from former internees and Smithsonian holdings, *The Art of Gaman* brings together a moving and diverse assemblage of internment art never before shown in one powerful collection.

As a Jewish heritage museum, The Breman tells the story of the Jews of Europe who were identified, separated from the general population, stripped of their possessions, rounded up and taken to concentration camps. Through exploring our own people's history, we have been sensitized to both the fragility of democracy and the need for vigilance when the human and civil rights of any population are threatened.

Delphine Hirasuna,

a third-generation Japanese American writer, uncovered the trove of amazing work shown in *The Art of Gaman*. She has said, "... the camps aren't well-known in the United States, even today. Many people will say they know there were camps, or that some people were put into a camp, but it was ethnic cleansing of the West Coast. They took everybody, no exceptions. They took kids out of orphanages and people out of hospitals."

This is a story that The Breman is compelled to tell. Mark your calendars — you won't want to miss it!



*Papier-Mâché Bonsai, Paper, wire, gravel, and stones, by Kameno Nishimura, Gila River, Arizona. In the arid Arizona desert where the Gila River camp was located, finding plant life suitable for bonsai, the art of miniature trees, was nearly impossible. That did not deter Kameno Nishimura, who made a pine tree bonsai out of papier-mâché and arranged it in a flat dish with gravel and stone. The Art of Gaman, Delphine Hirasuna; photo Terry Heffernan.*

## The Breman Book Group Explores Literature Relevant to the Holocaust

Do you ever wonder what happened to people in Italy, Bulgaria, or Greece during the terrible Holocaust years? The stories of The Holocaust are stories of Resourcefulness, Resistance, Rescue and Resilience.

There have been over 100 Holocaust titles in the Amazon list of best-selling books. Share these stories and learn more about the Holocaust at The Breman Book Group led by Breman VME and retired librarian Marianna Kaufman. The group reads memoirs, histories, biographies and fiction. Now in its sixth year, participants choose the books together, and different members lead the discussion.

The group started the 2011-2012 year with *Survival in Auschwitz* and *Rearwakening*, short memoirs by the Italian author Primo Levi. Upcoming selections include the novellas *The Shawl* and *Rosa* by Cynthia Ozick; *The Eichmann Trial* by Deborah Lipstadt; and *Churchill and the Jews*, by Martin Gilbert.

The Breman Book Group meets the third Wednesday of each month, September through May from 12:30 -2 p.m. at The Breman Museum.

All are welcome to come and sit in on a discussion; the only requirement is membership in The Breman Museum.

For more information please e-mail [mariannabkaufman@comcast.net](mailto:mariannabkaufman@comcast.net).

View videos produced by The Breman on our YouTube channel, including *Torn From Home: Jewish Children of the Holocaust*.

[www.youtube.com/thebremanATL](http://www.youtube.com/thebremanATL)

## With Thanks to the Following Donors to the Survivor's Legacy Film Fund

Spring & Tom Asher

The Blonder Family Foundation

Elinor Breman

James Breman

Peter Fishman

Eve & Joel Goldstein

Michael & Jack Hillman

Phyllis & Wayne Lazarus

S. Jarvin Levison

Sonia & Murray Lynn

Carol & Robert Nemo

Phyllis and Sidney Rodbell

The Rosenberg Family Foundation

Judith & Mark Taylor

## Markings *continued from page 8*

the history and legacy of Jews in our community. Many thanks go to Sandy Berman, who loves our archives and has helped us to learn about and love them too.

Serving as president of The Breman has been an extraordinary honor for me. I want to recognize and thank the past presidents of our museum for their service.

Some months hence will likely see the appointment of a new executive director, succeeding Jane Leavey. Jane has been the only director our museum has known, and she has discharged her responsibilities in a distinguished and exemplary manner. I am confident that the Search Committee, ably chaired by Gail Evans and George Stern, will identify and recommend to the Board of Trustees a highly qualified successor.

Finally, I know that you join me in congratulating our new co-presidents, Spring Asher and Joyce Shlesinger. They have worked together in the past on many successful projects, including major development programs, and I know that they will bring new leadership, energy, ideas, and vision to our beloved Museum.

I am grateful for all the support you have given me these past two years. Thank you all very much.

# The Necessity of Remembrance

by Felicia Feaster

Reprinted with permission from Walker Spring/Summer 2011 edition, The Magazine for The Walker School Community

Poet and philosopher George Santayana famously wrote “those who cannot remember the past are condemned to repeat it.” There is no better illustration of the necessity of remembrance than the project The Walker School junior Josh Zuckerman, 17, has engaged in for the second half of his junior year.

Beginning this spring, Josh began translating the testimony of Atlanta Holocaust survivors into beautifully written, moving accounts of their experiences. Drawing from transcripts of 130 interviews already catalogued at the William Breman Jewish Heritage & Holocaust Museum in Atlanta, it is Josh's job to distill those hours-long accounts into biographies for the Breman website.

You can read a sample of Josh's work at [www.thebreman.org/newlives](http://www.thebreman.org/newlives) and search for Ruth Lowenberg's profile. A challenging job for even a professional writer, Josh has done remarkably well at collapsing entire lives into 600+ word stories.

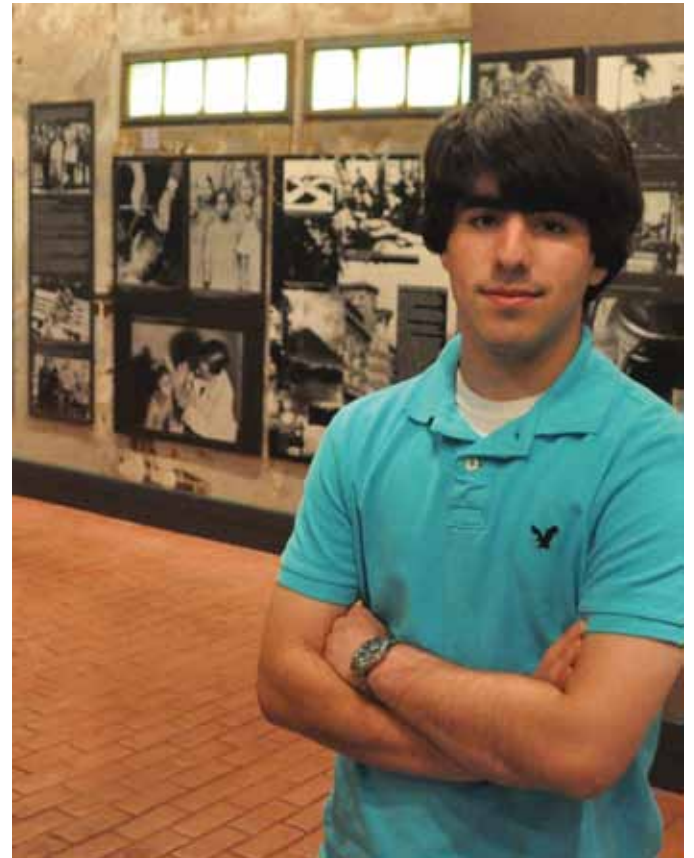
“I think it's extremely unusual even for someone older than him to have the sensitivity to take on a project like this,” says Ruth Einstein, the Breman's Special Projects Coordinator. “It's kind of amazing to me. There are a lot of adults who can't stand to have anything to do with that kind of sadness.”

Josh's biographies capture the poignant and all too common experience of survivors recalling the family members they lost in places like Auschwitz and the Lodz Ghetto and serve as a powerful reminder of the necessity of remembrance.

“We as a country, as a human race, can't forget what happened to these people and how low we can sink. I guess the only way to prevent anything like this from happening again is by reading first-person accounts,” says Josh.

Josh's participation in the project began with his grandmother and Holocaust survivor Irene Yabrow, who was born in Lodz, Poland, in 1935 and now lives in East Cobb. When Irene's family was ushered, along with other Jews, into the Lodz Ghetto, her mother quickly understood what was happening and managed to flee with her family to safety. Yabrow, 77, had never spoken with her children or grandchildren about her experiences.

But Irene had been contacted by Ruth Einstein, who got her talking about her war-time



experiences. When it came time to write up a narrative account from those transcripts, Irene suggested her grandson Josh: he was a good writer and a history buff.

“When Ms. Einstein interviewed her it was the first time in her life she opened up and told the world what happened,” Josh states.

After his success in writing up his grandmother's story, Josh was asked to write more accounts for The Breman. So far Josh has written seven stories drawn from transcripts housed at The Breman. He is also working on transcribing the two-hour testimony of a survivor who recorded his story in the eighties.

“The biggest wish for a lot of these aging survivors is to have their stories heard and to be remembered. I feel honored and proud that I can help fulfill their wishes and that my work is being featured in a museum dedicated towards the same noble goal,” says Josh.

In addition to his fascination with history, Josh is also interested in current events (he is an avid reader of *The New York Times* and Fox News online) and he hopes to study political science or economics in college. He is active in theater, does mock trials and is on the academic quiz team at The Walker School. This summer Josh will continue to contribute to The Breman's Holocaust project as an intern at the museum.

Doris & Martin Goldstein, in memory of Doris's brother, David Jesse Harris, from Lois Blonder; the Board, Staff & VMEs of The Breman; Betty & Lester Breen; Shirley & Perry Brickman; Judy Cohen; Gloria Frisch; Vicki & Rich Gilbert; Carole Goldberg; Elsa & Jay Goldberg; Jane Schiff & Lon Gratz; Marianna Kaufman; Barbara & Richard Plane; Sylvia & Werner Spiegel; Linda & Mike Weinroth  
 Barbara Halperin and Family, in memory of Gerald Allweiss, from Joan Schwartz  
 In memory of David Harris, from Janet & Leonard Meyer  
 Dr. & Mrs. Howard Hecht, in memory of Delores Gbur, from Marilyn & Sam Eckstein  
 Gerald Kline, in memory of Aaron Kline, from Jimmy & Lori Kilberg  
 Eydie & Steve Koonin, in memory of Eydie's father, Allen Schwartz, from Jane Schiff & Lon Gratz  
 Liane Levetan, in memory of her brother, Norman Raab, from Jacquie & Ben Hirsch  
 Jackie Levi, in memory of her mother, from Carole Goldberg  
 Victor Levy, in memory of his wife, Gertrude (Gittel) Levy, from Jacquie & Ben Hirsch  
 Fay Lewkowitz, in memory of her mother, Elsa Bilton  
 Betty Lipshutz, in memory of her husband, Robert Lipshutz, from Barbara Gavron  
 Mandy Merkel, in memory of her mother, Vida Schneider, from Peter Fishman & Babz Jacoby  
 Mike & Enid Mescon, in memory of their daughter, Nance Mescon, from Jacquie & Ben Hirsch  
 In memory of Evelyn Messer, from Carole Goldberg  
 Susan Moss and Peter Moss, in memory of Amy Moss, from Erica Hecht, Deedee Hamburger, Jacquie Sacks  
 Mr. & Mrs. Sam Olens, in memory of Herbert House, from Sheri & Steve Labovitz  
 In memory of Bennett Oxman, from Anta & Mendel Romm  
 Janet Perelmut & Family, in memory of her father, from Fran & Gary Kamp

Gail Raab and Family, in memory of husband and father, Norman Raab, from Jacquie & Ben Hirsch  
 Mrs. Ira Rachelson, in memory of Hariette Krugman, from Lilli & Adolph Weber  
 The Radetsky and Silver Families, in memory of Lona Cohen, from Joan Schwartz  
 Ronald Rosenthal, in memory of his mother, Mildred Rosenthal, from Patty & Richard Poline  
 Mr. & Mrs. Marc Rubenstein, in memory of Nancy, from Fran & Gary Kamp  
 Mr. & Mrs. Larry Rubin, in memory of Bertha Rubin, from Jody & Ramon Franco  
 Fanchon Sabel, in memory of her son, Michael Sabel, from Polly Kaplan  
 In memory of Gussie & Hymie Schnaar, from Mavis Wener  
 Susan Schoenbaum, in memory of her mother, Rose Conrad, from Jane Schiff & Lon Gratz  
 Marilyn & Harvey Schulman, in memory of Selma Emoff, from Sam & Gary Alexander  
 Linda Selig, in memory of her father, Jerome Weinkle, from Elinor Breman, Judith & Mark Taylor, Lillian & Adolph Weber  
 Nurit Shacham and Family, in memory of husband and father, Moti Shacham, from Eve & Harvey Mannes  
 Larry Sheron & Family, in memory of Marion Sheron, from Anne Birnbaum  
 Edith Silverstein, in memory of Rubyn Silverstein, from Sylvia & Werner Spiegel  
 Jim Sobery, in memory of his wife, Leah Sobery, from the Staff of The Breman  
 Scott & Tina Spector, in memory of Bernie Spector, from Shirley & Perry Brickman  
 The Tushman Family, in memory of Sally Birch, from Joan Schwartz  
 Ruth Ungerleider, in memory of Brigadier General Ret. Al Ungerleider, from Aviva & Morton Waitzman  
 Elaine Winer, in memory of Ruth Waxman, from Nancy & Zane Pollard

## The Breman Staff

**Judi Ayal**  
 Visitor Services & VME Support  
 jayal@thebreman.org  
 404-870-1632

**Liliane Kshensky Baxter, Ph.D.**  
 Director, Lillian & A.J. Weinberg  
 Center for Holocaust Education  
 lbaxter@thebreman.org  
 404-870-1872

**Sandra Berman**  
 Archivist  
 sberman@thebreman.org  
 404-870-1862

**Jennifer Campbell**  
 Curator, Special Exhibitions  
 jcampbell@thebreman.org  
 404-870-1871

**Ruth Einstein**  
 Special Projects, Webmaster,  
 Newsletter Editor  
 reinstein@thebreman.org  
 678-222-3732

**Demece Mickey Harvey**  
 Archival Assistant  
 dharvey@thebreman.org  
 404-870-1629

**Debbie James**  
 Controller  
 djames@thebreman.org  
 678-222-3737

**Phyllis Lazarus**  
 Marketing / Media Relations  
 plazarus@thebreman.org  
 404-870-7684

**Jane Leavey**  
 Executive Director  
 jleavey@thebreman.org  
 404-870-1861

**Sally Levine**  
 Specialist for Teacher  
 & Curriculum Development  
 slevine@thebreman.org  
 678-222-3700

**Maureen MacLaughlin**  
 Archival Assistant, Librarian  
 mmaclaughlin@thebreman.org  
 678-222-3752

**Judy Schancupp**  
 Membership/Museum Shop  
 jschancupp@thebreman.org  
 678-222-3707

**Kathryn R. Smith**  
 Sunday Visitor Services

**Michael Weinroth**  
 Coordinator, Holocaust  
 Education Speakers  
 mweinroth@thebreman.org  
 404-870-1630

### Attention, Friends!

The Breman is on the hunt for objects, letters, documents, diaries, etc., that relate to Jews in the Confederacy. We are exploring doing an exhibition and are looking for material to include. If you can help us by sharing something you or your family has or by suggesting someone we should speak with, we would love to hear from you. Please contact Jane Leavey at 404-870-1861 or jleavey@thebreman.org or Sandy Berman at 404-870-1862 or sberman@thebreman.org.

Thanks so much!



*Federal troops visiting relatives in Albany, Georgia, 1865.*

## U.S. Holocaust Memorial Museum Seeks Information and Assistance

The United States Holocaust Memorial Museum wants to help Holocaust Survivors and their families preserve their family history through three major projects:

### The Benjamin and Vladka Meed Registry of Holocaust Survivors

The Benjamin and Vladka Meed Registry of Holocaust Survivors is seeking the names of all survivors of the Holocaust and Nazi-era persecution — whether or not currently living. Please include information on Second Generation (2G's) and Third Generation (3G's).

Please register yourself or a family member at: [www.ushmm.org/remembrance/registry/](http://www.ushmm.org/remembrance/registry/)

### Remember Me?

The Museum is seeking the help of the Holocaust Survivor community in identifying 1,100 children who survived the war but were orphaned or displaced.

Please review the photos at: [www.ushmm.org/rememberme](http://www.ushmm.org/rememberme) and contact the Museum if you recognize any of the children. The Museum hopes to identify and record the experiences of these young survivors.

### The World Memory Project

The World Memory Project provides the public with an opportunity to help index information about the fate of millions of Holocaust victims contained in the Museum's historical documents. This information will then become searchable online for free, to help survivors and their families find information about loved ones.

Visit: [www.worldmemoryproject.org](http://www.worldmemoryproject.org) and follow the instructions to start transcribing documents today.

## Our 2011–2012 Volunteer Museum Educators: Bringing the Mission & Message of The Breman to Our Visitors

### VME EXECUTIVE COUNCIL

Ron Rosen, Chair; Ruth Hilsen, Co-Chair  
Joan Pressman, Immediate Past Chair  
Nancy Broudy, Secretary  
Sara Ghitis, Programming  
Rosalind Taranto, Sunshine Fund  
Shirley Brickman, At-Large  
Bonnie Aronin, At-Large  
Judy Cohen, Speakers Council Co-Chair  
Manuela Bornstein, Speakers Council Co-Chair

### DOCENTS

Bonnie Aronin • Irene Aronin • Eva Beldick  
Shirley Brickman • Mark Brooks • Nancy Broudy  
Judy Cohen • Miriam Cole • Jean Cooper  
Trudy Davis • Suzanne Dinur • Anita Eidex  
Howard Fagin • Cynthia Farber • Stuart Farber  
Murray Friedman • Sara Ghitis • Art Gittelman  
Doris Goldstein • Eve Goldstein  
Lenny Greenstein • Paula Gris • Beatrice Gruss  
Rose Haber • Guenther Hecht • Ellen Herold  
Ruth Hilsen • Charlotte Janis • Monica Katz  
Rosanne Kauss • Marianna Kaufman  
Phyllis Lazarus • Shirley Leaderman  
Tomas Lefkovits • Shirley Michalove  
Debbie Neese • Melanie Nelkin  
Shirley Osterneck • Judi Pawliger  
Barbara Planer • Nancy Pollard  
Joan Pressman • Pat Pugrant • Ron Rosen  
Judy Schancupp • Ellen Schwartz  
Joan Schwartz • Carla Silver • Frank Spiegel

Helen Spiegel • Rosalind Taranto  
Dede Thompson • Aviva Waitzman  
Jennifer Walters • Linda Weinroth • Leah Wolf  
Jennifer Yaffe

### HOLOCAUST SPEAKERS COUNCIL

Manuela Bornstein & Judy Cohen, Co-Chairs;  
Albert Baron • Henry Birnbrey • André Kessler  
Herbert Kohn • Murray Lynn • Tosia Schneider

### SPEAKERS

(Holocaust Survivors, Child Survivors,  
Children of Holocaust Survivors,  
Rescuers & Liberators)  
Aaron Alembik • Pola Arbiser • Albert Baron  
Eva Baron • Lili Baxter • Eva Beldick  
Goldie Bertone • Henry Birnbrey  
Manuela Bornstein • Penina Bowman  
Mariella Crea • Karen Lansky Edlin  
Miriam Fishkin • Henry Friedman  
Norbert Friedman • Henry Gallant • Paula Gris  
Kaiila Gutman • Benjamin Hiller  
Benjamin Hirsch • André Kessler  
Herbert Kohn • Stan Lefco • Tomas Lefkovits  
Henry Lewin • Murray Lynn • Erna Martino  
Jennie Moret • Sarah Popowski  
George Rishfeld • Tosia Schneider  
Eugen Schoenfeld • Gilbert Sherr  
Mathew Sikorski • Saba Silverman  
Frank Spiegel • Helen Spiegel • Werner Spiegel  
Gia Spielberg • George Stern • Betty Sunshine  
Mort Waitzman • Ben Walker

## Programs and Operations Made Possible in Part By the Following Endowments:

Elaine and Miles Alexander Family Endowment • The Anne & Bernard A. Birnbaum Fund for Holocaust Education • The Blonder Family Foundation • The Elinor & William Breman Endowment • The William Breman Jewish Heritage Museum Unrestricted Endowment Fund • The Judith & Elliott Cohen Oral History Collection • The Rae Alice and Bernard Cohen Memorial Fund • The Barbara E. Fishman Volunteer Museum Educators' Enrichment Fund • The Adele Frankenaue Fund for Holocaust Education • The Richard & Edith Hecht Memorial Fund • The Jarvin Levison Family Fund for Creating Community • The Carol and Robert Nemo Family Endowment for Educator Enrichment and Teacher Training in honor of William and Elinor Breman • The Jerry and Dulcy Rosenberg Family Fund in Honor of Elinor Rosenberg Breman • The Marlene & Bill Schwartz Charitable Fund • The William A. Schwartz Family Gallery Endowment • The Spielberg Family Fund for Holocaust Education • The Esther & Herbert Taylor Oral History Project • The Lillian & A.J. Weinberg Fund for Holocaust Education • Zachor Fund for Holocaust Education

# Breman Museum Membership

Listing as of September 15, 2011. Every effort was made to ensure the accuracy of all information; we apologize for any errors. The Breman relies on revenue generated from its membership base in order to provide valuable programs and services to the community each year. Thank you to all our members at every level. Your support makes a difference!

**\* Thank you and welcome to The Breman's new members! Thanks also to all who have upgraded their membership level!**

## PRESIDENT'S COUNCIL – \$5,000 - \$10,000

Spring & Tom Asher  
The Birnbaum Family\*  
Annie Birnbaum  
Dikla & George Birnbaum  
Natalie Birnbaum Fisch  
The Blonder Family  
Lois Blonder  
Suzanne & Michael Blonder  
Dale & Jeff Dyer  
Leslie & Doug Isenberg  
Elinor Breman  
Jim Breman  
Carole Goldberg  
Jarvin Levison  
Billi & Bernie Marcus  
Phyllis & Sidney Rodbell  
Marlene J. Schwartz  
Marlene & Gary Super  
Amy & Louis Taratoot  
The Zaban Fund  
Carol & Larry Cooper  
Kimberly & Michael Dinerman  
Laura & Marshall Dinerman  
Sara & Robert Franco  
Jennie & Alex Medeiros  
Judy Zaban

## GUARDIAN – \$2,500

The Argo Fund  
Amy & Robert Arogeti  
Beth & Joel Arogeti  
Jeanette Arogeti  
Jane & Mitch Durham  
Barbara & Larry Perlis  
Shirley Blaine  
The Cohen-Kogon Family  
Helen Cohen  
Pam & Alan Cohen  
Tova & Mark Cohen  
Judy & Marty Kogon  
Laurie & Michael Kogon  
Sara & Ross Kogon  
Jennifer Proffitt  
Marilyn & Sam Eckstein  
Gail Evans & Alvin Goldstein  
Lynn & Murray Friedman  
Lila Herbert  
Babz Jacoby & Pete Fishman  
Jane & Bob Leavey  
Jackie & Tony Montag  
Carol & Bob Nemo  
Barbara & Sanford Orkin  
Jane Schiff & Lon Gratz  
Phyllis & Stan Slutzky  
Brian Smooke  
Margie & George Stern  
Joan & Howard Weinstein

## CHAI – \$1,800

Joanne & Charlie Ackerman  
Sandy & Ozzie Berman  
The Arthur Blank Family  
Sally & Sammy Coolik  
Jean & Jerry Cooper  
Corky & Roger Gelder  
Andy Ghertner  
Doris & Marty Goldstein  
Pearlann & Jerry Horowitz  
Barbara & Alan Kaplan  
Ann & Michael Kay  
Lana & Richard Krebs

Phyllis & Wayne Lazarus  
Sonia & Murray Lynn  
Dede & Julian Mohr  
Debbie & Lon Neese  
Melanie & Allan Nelkin  
Zippi & Paul Reisman  
Bunny & Charles Rosenberg  
The Rosenberg Family  
Karen & Mark Musa  
Dulcy & Jerry Rosenberg  
Karen & Kenneth Rosenberg  
Michelle & Alan Rosenberg  
Joyce & Sonny Shlesinger  
Joanne & Herb Singer  
Sue & Dick Stern  
Judith & Mark Taylor  
Margaret & Bill Weiller  
Suzy Wilner

## BENEFACTOR – \$1,000

Elaine & Miles Alexander  
Pola & Sam Arbiser  
Ellen Arnovitz  
Candy & Steve Berman  
Bob Bonner  
Shirley & Perry Brickman  
Lisa & Ron Brill  
Judith & Elliott Cohen  
Ann & Jay Davis  
Nicole Ellerine & A.J. Robinson  
Ellen & Howard Feinsand  
Debbie & Robert First  
Barbara & Burt Gold  
Barbara & Jerry Greenbaum  
Jacquie & Ben Hirsch  
Cathy & Jeff Korotkin  
Phyllis Kozarsky & Eliot Arnovitz  
Jill & David Krischer  
Cathy Selig-Kuranoff & Steve Kuranoff  
Joel & Irwin Lowenstein  
Peter Mallen  
Saul Mallen  
Mimi Monett  
Valerie & Bill Needle  
Saralyn & Gene Oberdorfer  
The Jimmy Paradies Family  
Ruth Raubin  
Barbara & Maury Riff  
Robin & Clyde Rodbell  
Judy & Arnie Rubenstein  
Virginia & Milton Saul  
Joyce & Henry Schwob  
Linda & Steve Selig  
Joan & Stanley Srochi  
Irene & Howard Stein  
Betty & Alan Sunshine  
Halina & Alek Szlam  
Felicia & Joe Weber

## SPONSOR – \$500

Sam & Gary Alexander  
Susan Arnovitz Plasker  
Barbara & Ron Balsler  
Penny Berk  
Kelley & Neil Berman  
Annie Birnbaum  
Judy & Ronald Cohen  
Ilene Engel & Bob Arotzky  
Stacey Hader Epstein & David Epstein  
Stella & Stanford Firestone  
Ellen & Jack Holland

Yvonne & Emil Horesh\*  
George Houghtaling  
Betty Ann Jacobson  
Ann & Ted Kaplan  
Marilyn & Leslie Kelman  
Jack Kerker  
Carole & Sid Kirschner  
Cary Koplin  
Phyllis & Lewis Kravitz  
Ivah & Max Kukler  
David Kuniansky  
Diane & Michael Lederman  
Elaine Levin  
Karen & Daniel Levison  
Renee & Alan Lewow  
Brenda & Mark Lichtenstein  
Allen Lynn  
Sherry & Harry Maziar  
Caren & Michael Merlin  
Roberta Nemo & John Metz  
Sally Nemo  
Tamara & Dan Nemo  
Carolyn & Stephen Oppenheimer  
Diane & Walter Orenstein  
Michael Plasker  
Barbara & Marty Pollock  
Marlene & Stanley Rinzler  
Sonia Schwartz  
Marcia & Michael Schwarz  
Faye & Irwin Siegel  
Beth & Ed Sugarman  
Halli Cohn & Rich Warren  
Hylda & Dick Wilson  
Katherine & Michael Woocher  
Harriet & Norman Zoller

## PATRON – \$250

Stephanie & Marshall Abes  
Sandra Adair  
Toni & Joel Adler  
Judy & Aaron Alembik  
Cheryl & Warren Alifeld  
Dolores & Harold Arnovitz  
Ruth Arnovitz  
Eva & Murray Baron  
Evelyn & Al Baron  
Linda & Jim Bartling  
Sylvia & Saul Becker  
Eva & Gary Beldick  
Lesley & Bruce Berman  
Goldie & Lou Bertone  
Shirlye & Henry Birnbrey  
Rita & Herschel Bloom  
Betty & Lester Breen  
Lucinda & Robert Bunnen  
Frances Bunzl  
Daniel Caplan  
Sheldon Cohen  
Lora & Dean Coleman  
Brenda & Stanley Daniels  
Ellen Doft & Alex Katz  
Kathy & David Dorough  
Margo & Shiel Edlin  
Sharon & Howard Fagin  
Rosi & Arnoldo Fiedotin  
Laraine & Lowell Fine  
Lois & Larry Frank  
Jana Eplan-Frankel & Craig Frankel  
Mary & Sidney Franklin  
Peggy & Steve Freedman  
Phyllis & Jack Freedman  
Viki & Paul Freeman

Celia & Don Gilner  
Betty & Leon Goldstein  
Bernie Goldstein  
Susan Grant  
Billie & Mickey Greenberg  
Judy & Hank Greenstone  
Lauren & Jim Grien  
Sherry & Ike Habif  
Morris Habif  
Ruth & Mark Hackner  
Lynne & Jack Halpern  
Renie & Fred Halperin  
Dee Dee & Marc Hamburger\*  
Stuart Hillman  
Etta Raye Hirsch  
Gladys Hirsch  
Nancy & John Hirsch  
Randy & Tom Karsch  
Rosthema & Paul Kastin  
Marice Katz  
Ruth & Sidney Katz  
Rosanne & Andy Kauss  
Barbara Krinsky  
Andrea & Mike Leven  
Barby & Bert Levy  
Sandy & Bob London  
Suzie & Bill Lowenstein  
Anita Lynn  
Esther & Howard Margol  
Erna & Larry Martino  
Lenore Maslia  
Shirley Michalove & Arthur Heyman  
Betty & Malcolm Minsk  
Simone & Steve Nehmen  
Barbara & Buddy Ordovery  
Judi & Richard Pawliger  
Deborah Payne  
Nancy & Zane Pollard  
Elaine & Bernard Pollock  
Pat & Bob Pugrant  
Lisa & Hal Rabinowitz  
Shelli Bank & Michael Rosenzweig  
Judy & Joel Schancupp  
Susan & Ray Schoenbaum  
Joyce & Jay Schwartz  
Fred Shaftman  
Michele & Glenn Shear  
Sukey & Hymie Shemaria  
Carla & Arthur Silver  
Judy Smith  
Kerri & Jeffrey Snow  
Debbie & Stan Sonenshine  
Cantor Jill & Herbert Spasser  
Margie Steiner  
Wendy & Cedric Suzman  
Bob & Dede Thompson  
Linda Tzoref  
Angie & Skip Weiland  
Donna & Michael Weinstock  
Nancy & Tim Williams  
Jackie & Dave Wolf  
Rita Goldstein Wolfson & Harold Wolfson  
Sheila & Merrill Wynne  
Jane & Harold Yudelson  
Connie & Robert Zerden  
Susie & Arnold Zweig

## DONOR – \$150

Ann Abrams  
Sandy & Davis Abrams

Ann & Herb Alperin  
Sara Alterman  
Marla & Sidney Appel  
Arlene & Dan Apperlouth  
Elinor & Martin Arlock  
Teri & Steve Astren  
David Bagner  
Betsy & David Baker  
Turner Ball & Alan Richmond  
Pat & Jack Balsler  
Mary Carole Cooney & Henry Bauer  
Lili Kshensky Baxter & Tom Baxter  
Diane & Marvin Bernstein  
Natalie & Matthew Bernstein  
Karen & David Birnbrey  
Leslie & Marshall Bloom  
Ann & David Bluestein  
Elaine & Jerry Blumenthal  
Mona Blumenthal  
Barbara & Leonard Bock  
Penny Bowman  
Galit & Joseph Breman  
Joan & Don Brown  
Irene & Richard Burstein  
Janet Camhi  
Sandy & Jay Coffsky  
Kitty Meyers Cohen & Judge Ezra Cohen  
Linda & Gene Davidson  
Davie & James Davis  
Suzanne & Dan Dinur  
Harriet & Sam Draluck  
Gail Dubler  
Carole & Marvin Epstein  
Kaydee Erdreich-Breman  
Elisa & Bobby Ezor  
Clara Feldman  
Jody & Ramon Franco  
Phyllis & Richard Franco  
Lauri & Neal Frenkel  
Susan & Lance Friedland  
Abby Friedman & Harry Heiman  
Annette & Stephen Friedman  
Shirley & Arnold Friedman  
Micheline & Bob Gerson  
Eve & Joel Goldstein  
Judy & Ron Goldstein  
Lainy & Bobby Goldstein  
Joy Gordman  
Sara Gottlieb & David Bader  
Ilene & Adrian Grant  
Priscilla & Ross Grumet  
Margaret & Richard Guthman  
Nanci & Bob Halper  
Lynne & Howard Halpern  
Ellen & David Herold  
Lila & Doug Hertz  
Meg Heyer  
Michal & Jack Hillman  
Sandra & Jack Horowitz  
Julie Horowitz & Andy Gothard  
Sylvia & Barry Hyman  
Betty & Richard Isenberg  
Deborah & Lou Jacobs  
Debbie James  
Jenny & Norman Kalmin\*  
Polly Kaplan  
Sally & Phil Kaplan

*continued on page 18*

# Breman Museum Membership *continued from page 17*

Monica Katz  
 Marianna Kaufman &  
 Diana Aléman  
 Janis & Harold Kirtz  
 Marcy Steinberg-Klehr &  
 Harvey Klehr  
 Barbara & Bill Klineman  
 Marcie & Barry Koffler  
 Joan Kornman  
 Lee & Gene Kout  
 Barbara & Bob Krasnoff  
 Ray Ann Kremer &  
 George Shapiro  
 Audrey & Michael Landy  
 Shirley Leaderman  
 Sandybeck Lease  
 Anna & David Leavey  
 Jennifer & Michael Leavey  
 Brenda Leder  
 Faye & Craig Lefkoff  
 Carole & Stephen Legum  
 Renay & Alan Levenson  
 Berna & Noah Levine  
 Nina & Donald Levine\*  
 Sally & Jeff Levine  
 Meryl & Richard Levitt  
 Randi & Sidney Levy  
 Cindy & Rabbi Shalom Lewis  
 Eva & Charles Lipman  
 Deborah Lipstadt  
 Eve & Harvey Mannes  
 Denny Marcus & Andre Schnabl  
 Elyse Mintz & Claudia Shaw  
 Susan Moray\*  
 Jennie & Macy Moret  
 Terry & Stanley Ney  
 Johanna & Rabbi Hillel Norry  
 Shirley Osterneck  
 Hank Oxman  
 Hilly & Gerry Panovka  
 Esther & Stan Rawn  
 Frederick Reeves  
 Shirley & Don Reisman  
 Lauren Rich  
 Inge Robbins  
 Maxine & Ron Rosen  
 Judy & Phillip Rosenberg  
 Peggy & Manny Roth  
 Louise & Edwin Rothberg  
 Brenda & Bill Rothschild  
 Janice Rothschild Blumberg  
 Sue & Alan Rothstein  
 Anita & Mark Rottner  
 Tosia & Alfred Schneider  
 Rachel & Lawrence Schonberger  
 Ellen & Sandy Schwartz  
 Maxine & Hank Sherry  
 Joanie & Lewis Shubin  
 Marilyn & Josh Shubin  
 Tobyanne & Arnie Sidman  
 Linda Silberman  
 Sandra & Gary Silver  
 Susan & Billy Silver  
 Johanna & David Skid  
 Edith Smith  
 Sylvia Smith  
 Michelle & Michael Sobel  
 Frieda & Leon Socol  
 Judy & Allen Soden  
 Laurie & Bob Spector  
 Marsha & Jan Spector  
 Helen & Frank Spiegel  
 Sylvia & Werner Spiegel  
 Anita & Jeff Stein  
 Marilyn & Mickey Steinberg  
 Sara & Paul Steinfeld  
 Boots & Ken Strauss  
 Estelle & Walter Strauss

Helaine & Richard Sugarman  
 Janet & Phil Sunshine  
 Rosalind Taranto  
 Naomi Alazraki Taylor &  
 Andrew Taylor  
 Susan & Sidney Tourial  
 Marsha & Chuck Vrono  
 Leslie & Fred Wachter  
 Harriet & Paul Weinberg  
 Milton Weinman  
 Linda & Michael Weinroth  
 Shirley Wender  
 Nanette & Julius Wenger  
 Renee & Sam Werbin  
 Melinda & Steve Wertheim  
 Ava & Bob Wilensky  
 Wendy & Richard Winer  
 Sue & Jon Winner  
 Lewis Winter  
 Leah Wolf  
 Betty Ann & Bernard Wolff  
 Barbara & Mike Wolfson  
 Elena Zimand & Simcha Pearl  
 Jeannette & Michael Zukor  
 Jane & Edward Zwig

## FAMILY - \$75

Barbara & Mel Abend  
 Gloria Abramowitz\*  
 Lynne & Robert Alpern  
 Linda & Allen Altman  
 Dara & Jared Amram\*  
 Curtissa Anderson  
 Tina & Jake Arbes  
 Zoya & Jack Arbiser  
 Dorita & Hal Arnold  
 Phyllis & Joe Arnold  
 Bonnie Aronin  
 Irene Aronin  
 Johanna & Joseph Asher  
 Juliet Asher & Michael Golden  
 Melanie & Seth Asher  
 Sarah & Lee Asher  
 Bonnie Baer & Jim McCarn\*  
 Terri & Laury Bagen  
 Judith & Joseph Balaban  
 Claire & Arnold Balsler  
 Lara & Michael Balsler\*  
 Sandra & Clive Bank  
 Terry Bardagjy\*  
 Gale & Stephen Barnett  
 Heidi & Doug Barron  
 Susan & Jonathan Barry  
 Joe Barton  
 Alyssa & Steven Barton  
 Tom Bauer  
 Amanda Baxter & Ian Zabor\*  
 Janice & Rabbi David Baylinson\*  
 Sheena & Brian Beasley\*  
 Malvina & Sasson Bechor  
 Elaine & David Beeber  
 Linda & Bruce Beeber  
 Rabbi Peter Berg  
 Betsy Berman & Tom Haynes\*  
 Judy & Mark Bernath  
 Rebecca & Brent Bernath\*  
 Linda & Stan Bernknopf  
 Heleen & Arnold Berry  
 George Bevington\*  
 Carol Lynn & Peter Birnbaum  
 Joanne & Eddie Birnbrey  
 Laurie Blank\*  
 Brooke & Robert Blasberg\*  
 Sheila & Allan Bleich  
 Cheryl & Myron Bloom  
 Rabbi P. Irving Bloom  
 Jennifer & Steven Bodner  
 Manuela Bornstein

Sherri & Bill Bornstein\*  
 Richard Borth  
 Miriam & Marvin Botnick  
 Linda & Joshua Brener  
 Carol & John Brookes\*  
 Beth & Gavin Brown  
 Paula & Mark Budnitz\*  
 Laura Bulbin & Ron Stein  
 Gail & Harvey Burger  
 Phyllis & Neal Busch  
 Jane & Scott Butler  
 Heather & Allen Butler\*  
 Carol & William Callaway\*  
 Linda Cappelletti &  
 Jerry Richman\*  
 Diane & David Champa  
 Charlie Chasen & Jamie Collins\*  
 Deedee Chereton  
 Marcia & Michael Cohen\*  
 Shirley & Stanley Cohen  
 Eugene & Harold Cohn  
 Gail Cohn & Harvey Danits  
 Miriam & Stephen Cole  
 Jamie Collins & Charlie Chasen  
 Evelyn & Milton Crane  
 Mariella & Dominick Crea  
 Karen & Frank Czick  
 Trudy & Marvin Davis  
 Rhonda & Stephen Dermer  
 Elaine & Alan Dinerman  
 Cpl. Deborah Director &  
 Tony Belser  
 Alison & Michael Doerfler\*  
 Andrea Doneff &  
 Richard Robison  
 Merrill Draluck\*  
 Judy & Jerry Dubrof  
 Cydnee Dubrof\*  
 Sarah Duwell  
 Juanita & Herbert Eber  
 Karen & Andy Edlin  
 Bruce Ehrens\*  
 James Elliott\*  
 Jeanie & Marshall Eidex  
 Anita & Max Eidex  
 Ruth Einstein & Tish Shapiro  
 Barbara Eisenberg  
 Janice & Richard Elin  
 Elise & Jay Empel  
 Ina & Harold Enoch  
 Jan & Warren Epstein  
 Marcia & Jacob Epstein  
 Cynthia & Stu Farber  
 Carole Feinberg  
 Marilyn & Alan Feingold  
 Dede & David Feldman  
 LuEllen & Lewis Feldman  
 Judith & Edward Feldstein  
 Cathy & Thomas Fiebelkorn\*  
 Judy & Paul Finkel  
 Janie & Bob Fischbach  
 Andy Fisher\*  
 Jane & Alan Fishman  
 Rebecca & Leonard Fishman  
 Marianne Fixelle  
 Vicki & Barry Flink  
 Traci & Jeff Flome\*  
 Janice & Maury Fradkin  
 Fayne Frankel  
 Irma & Milton Freedman  
 Della & David Fried\*  
 Henry Friedman  
 Linda & Michael Friedman  
 Sandi & Gerald Friedman  
 Robin & Darrin Friedrich  
 Gloria Frisch  
 Andree & Marc Frost  
 Susan & Butch Frumin\*  
 Betty Furst

Nancy & Steve Gallant  
 Harriette Gershon  
 Sally & Paul Ginburg  
 Matile Ginburg  
 Adele & Gary Glasser  
 Judy & David Glauner\*  
 Michele Glazer Hirsch\*  
 Caroline & Randy Gold  
 Linda & Nelson Gold  
 Sandi & Arthur Goldsmith  
 Karen & Steven Goldstein  
 Elise & Philip Goldstein  
 Ellen & Paul Goldstein  
 Kristine & Michael Goldstein\*  
 Marcia Goldstein & John Sherwin  
 Penny & Jerry Goldwasser  
 Bryan Golson & Michael Gross\*  
 Dee & Sy Goodman  
 Charlotte & Harry Gordon  
 Melinda & Steven Gottfried  
 Joy & Alan Greenberg  
 Brenda & Morton Greenblatt\*  
 Emily & Jeffrey Grosfoss  
 Marilyn & Larry Gross  
 Sylvia Gross  
 Vicki & Rael Grosswald  
 Elaine Gruenhut  
 Beatrice Gruss & Benson Caplan  
 Sherie & Artie Gumer  
 Lisa Beth Gunthorp\*  
 Billie Guthman  
 Juan Gutierrez & Carl Lange  
 Steve Guy\*  
 Alisa & Arthur Haber  
 Barbara & Jay Halpern\*  
 Randy & Larry Halpern  
 Robin & Rick Halpern  
 Sherry & Alvin Halpern  
 Suzanne Hanein &  
 Joel Eisenberg\*  
 Janis Harris\*  
 Haven Hawley & Kathy McKee  
 Erica Hecht  
 Gloria & Howard Hecht  
 Anna & Jerry Heltzer  
 Linda & David Hendelberg  
 Helen & Harold Hersch\*  
 Allan M. Hess  
 Lyons Heyman  
 Ruth Hilsen  
 Elaine & Paul Hirsch  
 Esta Jean & Jack Hirsch  
 Michele & David Hirsch  
 Susan Hirsch  
 Bobbie & Stan Hollander  
 Shalom Holzer\*  
 Jodie & Steven Jackson  
 Cindy & Charlie Jaret  
 Tilly & Bennie Joffe  
 Ann & J.T. Jones  
 Cheryl & David Joss  
 Ralda & Ralph Kahn  
 Anna Kaminer  
 Charlotte & Allen Kaminsky  
 Judy Kaplan & Bill Staton\*  
 Hazel & Herb Karp  
 Helen & Stan Kasten  
 Carol & Arthur Katz  
 Ellen & Dan Katz  
 Fred Katz  
 Alison & Jeff Kaufman  
 Virginia Pierce-Kelly &  
 Phillip Kelly\*  
 Nan & Stephen Kennedy  
 Candace & Jeff Kerker  
 Marsha & Andre Kessler  
 Janet & Paul Kirschbaum  
 Daniel Klein  
 India & Paul Klein

Ruth & Ralph Klopper  
 Frances & Herbert Kohn  
 Elaine & Alan Kolodkin  
 Roslyn Konter  
 Yuliya Korabelnikova &  
 Victor Vaysman\*  
 Jeanney & Steve Kutner  
 Sheri & Steve Labovitz  
 Emmanuel Landau  
 Ronni & Gary Landau  
 Paul Lavietes  
 Carol & Bob Lazerson  
 Mary & Edward Leader\*  
 Evelyn & Harold Lefkoff  
 Rabbi Josh Lesser  
 Rebecca & Rabbi Brad  
 Levenberg\*  
 Jill & Jeff Levenson  
 Deborah & Jay Levin  
 Vivian & Allen Levine\*  
 Ellen & Raphael Levine  
 Esther & Michael Levine  
 Nancy & Marshall Levine  
 Rita & Michael LeVine  
 Susan & Jerry Levine  
 Ruth & Gary Levison  
 Miriam & Ted Levitas  
 Brita & Alvin Levy  
 Faith & Howard Levy  
 Valerie & Jeff Levy  
 Amy & Bryan Lewis  
 Brenda & Alan Lewis  
 Esther & Burt Lewyn\*  
 Judy & Allen Lipis  
 Linda Nathanson-Lippitt &  
 Alan Lippitt\*  
 Rita & Bill Loventhal  
 Ruth Lowenberg\*  
 Joyce Lowenstein  
 Leslie & Chuck Lowenstein  
 Roberta Lynn & Gary Wechsler\*  
 Beverly & Tom Mahone\*  
 Jill & Hugh Mainzer  
 Faye & Brian Maloney  
 Gerri & Coleman Mandelblit  
 Arlene & Steve Marcus  
 Irma & Basil Margolis  
 Marilyn & Lawrence Margolis  
 Susan Martos  
 Jeanie & Albert Marx  
 Doris & Sam Massell  
 Amy Sue & Neal Maziar  
 Gail & Butch Medwed  
 Janet & Leonard Meyer  
 Arden & Jeff Miller\*  
 Ilene & Jon Miller  
 Nancy Miller\*  
 Sheila & Donald Minsk  
 Ali & Kevin Mitchell  
 David & Niamh Mitchell  
 Arlene & Frank Mix\*  
 Karen & Andrew Much  
 Katharine Muller  
 Cathy Rae Nash\*  
 Sandi & Julie Nessel  
 Sharon Neulinger &  
 Richard Kaplan  
 Michael Neuren  
 Beth & Benjamin Nowak  
 Beverly & Bradley Nozick\*  
 Rebecca & Paul Oberman\*  
 Margie & Steve Osheroff  
 Mario & Lynn Oves  
 Sandy & Bernie Palay  
 Jennifer & David Pelcyger  
 Helen Perkel\*  
 Mechal Perl & Isaac Antibi\*  
 Barbara & Dick Planer  
 Patty & Rich Poline

# Breman Museum Membership *continued from page 18*

Judy & Seymour Pomper  
 Julie & Brian Praver  
 Joan Pressman  
 Lynn & Barry Prusin  
 Sarah Putney &  
 Elizabeth Weisberger\*  
 Rabbi Steven Rau  
 Lynn & Lewis Redd  
 Patty & Douglas Reid  
 Ralda & Marty Reish  
 Ethel & Bob Reznik  
 Vicki & Gilbert Rich  
 Penina & Bruce Richards\*  
 Gail & Allan Ripans  
 Pamela & George Rishfeld  
 Karen & Scot Rittenbaum  
 Carolyn Rivard\*  
 Susan Robinson &  
 Lee Kirby Loeffler\*  
 Judy & Shai Robkin  
 Heather & Jonathan Rodbell  
 Nancy Rohling\*  
 Anta & Mendel Romm  
 Barry Roseman  
 Susan & Larry Rosen\*  
 Rachael & Jack Rosenberg  
 Robin & Fred Rosenberg  
 Ruth & Mark Rosenberg  
 Barbara & Ish Rosenblit  
 Fran & Howard Rottenberg  
 Kathy & David Rubenstein  
 Carol & Joe Rubin  
 Barbara & Alan Rucket  
 Kathy & Howard Sachs  
 Julia & Leonard Sacks  
 Melanie Sack-Stearns\*  
 Michelle & James Salmans  
 Susan & Rabbi Neil Sandler  
 Teddi & Donald Sanford  
 Barbara Schatten  
 Michele & George Scheer  
 Fran & Jerry Scher  
 Jeri Scherz-Salit & Hal Scherz  
 Lew Schiffman  
 Barbara Schneider  
 Ann & Col. Irving Schoenberg  
 David Schoenfeld\*  
 Sherrie & Lorry Schrage  
 Lauren & Tim Schrage\*  
 Judy & Alan Schulman  
 Susan & Dale Schwartz  
 Bob Schwartz & Jamie Schwartz  
 Rona & Barry Seidel  
 Janet Selig & Jeff Bernstein  
 Carol Senf  
 Karen Senft\*  
 Jennifer & David Sewall\*  
 Gina & Sam Shapiro\*  
 Lori Shapiro & Cary Goldenthal  
 Faith & Howard Shatzman  
 Dale Shields & Malcolm Lindy  
 Missy & Alan Shoenig  
 Claudia & Daniel Shorr  
 Barbara & William Shoulberg  
 Ruth Siegel  
 Barbara & Mathew Sikorski  
 Sydelle & Irwin Silberman  
 Beth & Benjamin Sillins\*  
 Anne & Paul Silver\*  
 Diana Silverman  
 Sharon & Howard Silvermintz  
 Jerilyn & Charles Simon  
 Michelle & Gary Simon  
 Susan & Stanley Simon  
 Sydney Simons  
 Cathy & Robert Sinsheimer  
 Laura & Jeffrey Sladkus\*  
 Vicky Sloan\*  
 Lynne & Richard Smith\*

Merle & Myron Smith  
 Judith & Stan Sobel  
 Susan & Morris Socoloff\*  
 Bella Solnik  
 Alana & Marc Sensenshine  
 Rosalind & Barry Spector  
 Iris & Ben Stein  
 Shari & James Steinberg  
 Mary Stovroff\*  
 Berylann & Al Strada  
 Ruth & Hiram Sturm  
 Barbara & Rabbi Alvin Sugarman  
 Karen Summers & Jeffrey Finkel  
 Arlene & David Taylor  
 Michele & Kenneth Taylor\*  
 Sandy & Tom Teepen  
 Barbara & Gary Teller  
 Shirley & Stanley Tenenbaum  
 Julia Ann & Robert Teplis  
 Sherry Thacker\*  
 Nathan Tieman  
 Lisa & Evan Toporek\*  
 Robin & Evan Torch  
 Lillian Troop  
 Todd Tucker\*  
 Andrea & Paul Turry\*  
 Arlene & Bruce Turry\*  
 Jill & Jeff Van Tosh  
 Gary Vogin  
 Aviva & Mort Waitzman  
 Ronit Walker & Matt Bronfman  
 Ruth & Ben Walker  
 Jenny Walsey\*  
 Scott & Jill Walsey\*  
 Jennifer & Stephen Walters  
 Carolyn Wasser  
 Marilyn & Allan Wasserman  
 Lilian Ross Weber &  
 Adolph Weber  
 Cathy & Arnold Weil\*  
 Phyllis & Michael Weiser  
 Nancy & Evan Weisman  
 Helene & Howard Weiss  
 Samuel Weissman  
 Linda & Bob Wener  
 Mavis & Jeff Wener  
 Deanne & Morris Whitlock  
 Hannah & Miles Whitlock  
 Carolyn & Gilbert Wildstein\*  
 Barbara & Frank Wilensky  
 Ruth & Herschel Wisebram  
 Regina & David Witt  
 Doreen & Burt Wittenberg  
 Flo & Harold Wolf\*  
 Cheryl & Phil Yagoda  
 Tammy Zacks  
 Barbara & Thomas Ziff  
 Ellyse & Warren Zindler  
 Marvin Zion

## INDIVIDUAL - \$50

Fran Ackerman  
 Andrew Adair\*  
 Douglas Adair\*  
 Edna Adler  
 Cookie Aftergut  
 Phillipa Ahuja\*  
 Gary Alembik\*  
 Helen Alexander  
 Elizabeth Alterman  
 Norman Asher  
 Shira Asherman\*  
 Cherie Aviv  
 Lauren Azoulai  
 Mark Bauman  
 Jay Bernath\*  
 Linda Bell\*  
 Arnold Beskind  
 Jane Bick\*

Daaiyah Bilal\*  
 Jack Bleich  
 Shirley Borenstein  
 Judy Bozarth  
 Sybil Breman  
 Henry Brent\*  
 Harold Brody  
 Mark Brooks  
 Nancy Broudy  
 Judith Brown\*  
 Lorrie Brown  
 Helaine Buchwald\*  
 Karen Burton\*  
 Rachel Buzzerd\*  
 Steve Chervin  
 Ruthie Cohen\*  
 Sharon Cohen  
 Tilda Cohen\*  
 Patrick Crane  
 Sandra Cuttler  
 Claire D'Agostino\*  
 Gary Deutsch  
 Ruth Dubin  
 Annette Easton  
 Margie Eden  
 Dawn Eidelman\*  
 Cheryl Eisenberg  
 Kristin English\*  
 Eileen Epstein  
 Tommy Faircloth\*  
 Susan Feinberg  
 Patricia Fine  
 Rosa Fitterman  
 Sandra Flatow\*  
 Linda Freeman\*  
 Rochelle Friedman  
 Sandra Fry\*  
 Janis Gaines\*  
 Henry Gallant  
 Jackie Garson-Howard  
 Tim Gay\*  
 Zoe Gelder  
 Sara Ghitis  
 Bruce Gillett\*  
 Abe Gilner  
 Art Gittelman  
 Judith Glassman  
 Barbara Glazer  
 Dale Glenn  
 Beth Gluck\*  
 Mollie Goldberg  
 Carolyn Goldsmith  
 Sherry Graff\*  
 Gordon Graham\*  
 Jacqueline Granath  
 Leonard Greenstein  
 Paula Gris  
 Teddy Haber  
 Nancy Hamburger  
 Elaine Harris  
 Carol Hart\*  
 Delois Hatter\*  
 Guenther Hecht  
 Gail Heyman  
 Eve Hoffman  
 Phyllis Hoffman  
 Linda Holly  
 Toby Holzer  
 Judy Horowitz  
 Millie Hyman  
 Kitty Jacobs  
 Cathy Jacobson  
 Charlotte Janis  
 Susan Jay  
 Deborah Johns  
 Shannon Johnson\*  
 Milton Kafoglis\*  
 Alice Kaplan  
 Gus Kaufman\*

Paul Kaufman  
 Katherine Kennedy  
 Sandy Kesler\*  
 Joyce Kimmel\*  
 Emily Kisber  
 Anne Koenig  
 Deena Koniver  
 Marcia Kramer\*  
 Rabbi Philip Kranz  
 Barbara Kruger  
 Davee Kuniansky  
 Murray Kurtzberg  
 Karen Langley\*  
 Jean Lawson  
 Stan Lefco  
 Tomas Lefkovits  
 Liane Levetan  
 Bo Levine  
 Liz Levine  
 Phyllis Levine  
 Phyllis Levine  
 Hank Lewin  
 Mimi Lewis\*  
 Frank Lindauer  
 Betty Lipshutz  
 Iris Lloyd\*  
 Marsha Londe  
 Rita Marokko  
 Dan Maslia  
 Doreen Massell  
 Erin Mazursky\*  
 Nancy Jo McDaniel  
 Kendall McMahan-Kitchens\*  
 Jackie Metzler  
 Ellen Mills\*  
 Perry Mills  
 Jane Moore\*  
 Andre Nahmias  
 Adele Northrup  
 Reina Nuernberger  
 Dianne Oden\*  
 Debby Overstreet  
 Gary Palgon  
 Beth Parks  
 Howard Peck  
 Caroline Philson  
 Russell Plasczyk\*  
 Naomi Popkin  
 Cecile Prager\*  
 Marilyn Prevor  
 Ruth Rados  
 Lesley Radov\*  
 Ilse Reiner

Roz Reiss\*  
 Simon Reynolds\*  
 Eileen Riesenburger\*  
 Flora Rosefsky  
 Estelle Rosenberg  
 Marcia Rosenberg  
 Marjorie Rosing  
 Nancy Ross  
 Marcia Rothschild  
 Rosemary Routman\*  
 Cookie Rubin  
 Charlotte Sachs  
 Ralph Sacks  
 Annette Saparow  
 Lynda Schaffer  
 Joan Schwartz  
 Tessa Shaban  
 Julie Sharp  
 Louise Shaw  
 Jack Shenk  
 Sybil Shier  
 Betty Ann Shusterman  
 Lorraine Siegel  
 Richard Siegel  
 Edith Silverstein  
 Gloria Smiley  
 Barbara Snow  
 Kaethe Solomon  
 Dan Maslia  
 Gerald Starling\*  
 Ruth Stockinger  
 Jack Taffel  
 Shirley Tauber-Nguyen\*  
 Mary Taylor  
 Travis Taylor\*  
 Betsy Teplis  
 Paul Teplis  
 Jody Thompson\*  
 Marilyn Tuckman\*  
 Maddy Urken  
 Joan Vitner  
 Kent Watson\*  
 Irma Weiner  
 Estelle Weinstein\*  
 Marjorie Weinstein  
 Marvin Weintraub  
 Frances Weiss  
 Colleen Weston  
 Karen Widmer\*  
 Leigh Wilson  
 Irene Yabrow\*  
 Jennifer Yaffe  
 Ruth Zeidman  
 David Zinner\*

## YOM HASHOAH, HOLOCAUST REMEMBRANCE DAY 47<sup>TH</sup> ANNUAL COMMUNITY-WIDE COMMEMORATION

SUNDAY, APRIL 22, 2012, 10:30 A.M.  
 (30<sup>TH</sup> OF NISAN 5772)

AT THE MEMORIAL TO THE SIX MILLION  
 GREENWOOD CEMETERY, RAIN OR SHINE

THE BREMAN MUSEUM WILL BE OPEN  
 FREE OF CHARGE FROM 1 - 5 P.M.

1440 Spring Street NW (at Spring & 18th Streets)  
 Atlanta, Georgia 30309

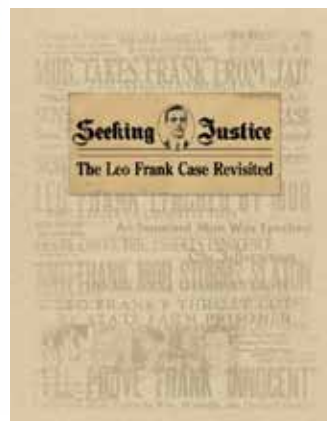


PLEASE DELIVER IMMEDIATELY!  
 -DATED MATERIAL-

Non Profit  
 US Postage  
 Paid  
 Permit  
 No. 8326  
 Atlanta, GA

**The Elinor Rosenberg Breman  
 Museum Shop — Where Shopping is a Mitzvah!**

**Sale!**



**20% off  
 Breman  
 Museum  
 Exhibition  
 Catalogues**

**May not be  
 combined with  
 member  
 discounts.**